



FIBER OPTIC PRODUCTS

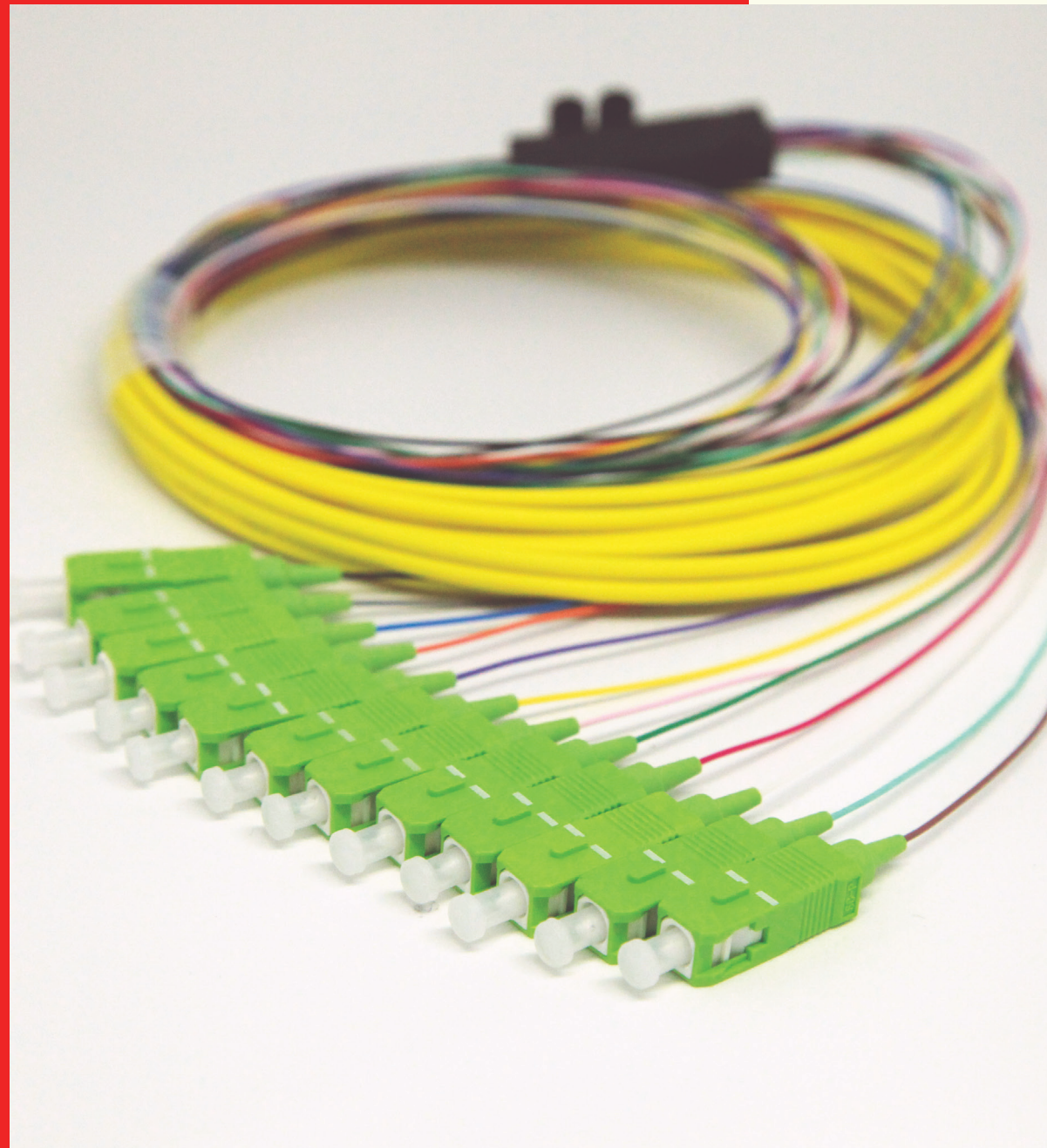
CATALOGUE

■ INTRODUCTION

Optical fiber can be used as a medium for telecommunication and computer networking because it is flexible and can be bundled as cables.

It is especially advantageous for long-distance communications, because light propagates through the fiber with little attenuation compared to electrical cables.

This allows long distances to be spanned with few repeaters.



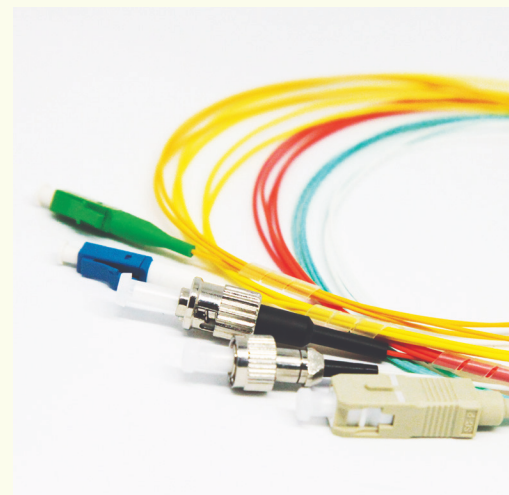
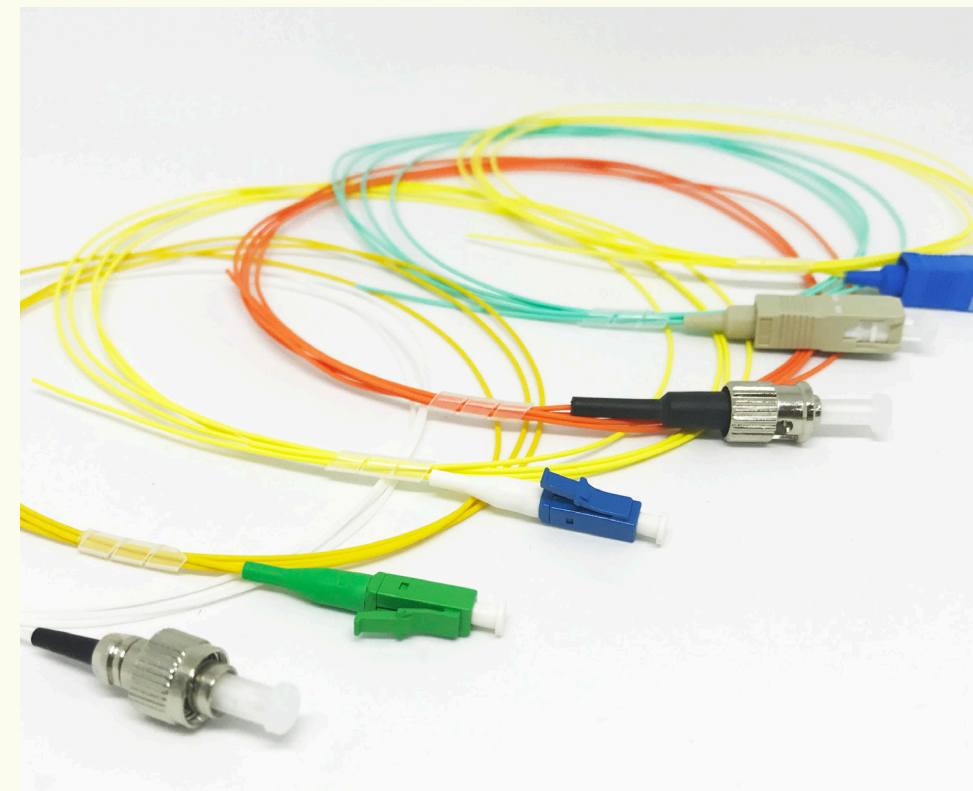
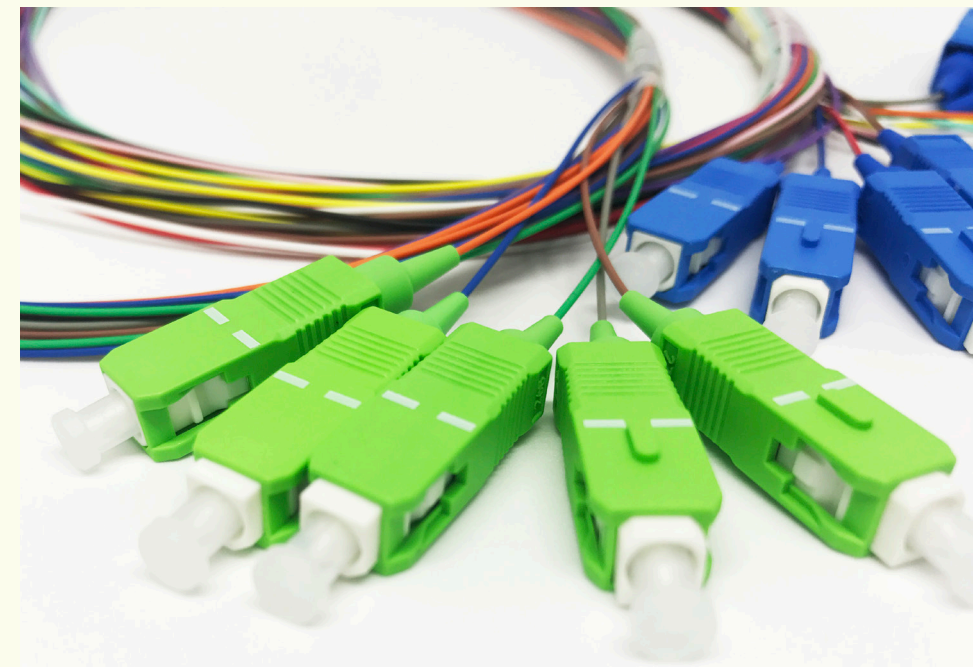
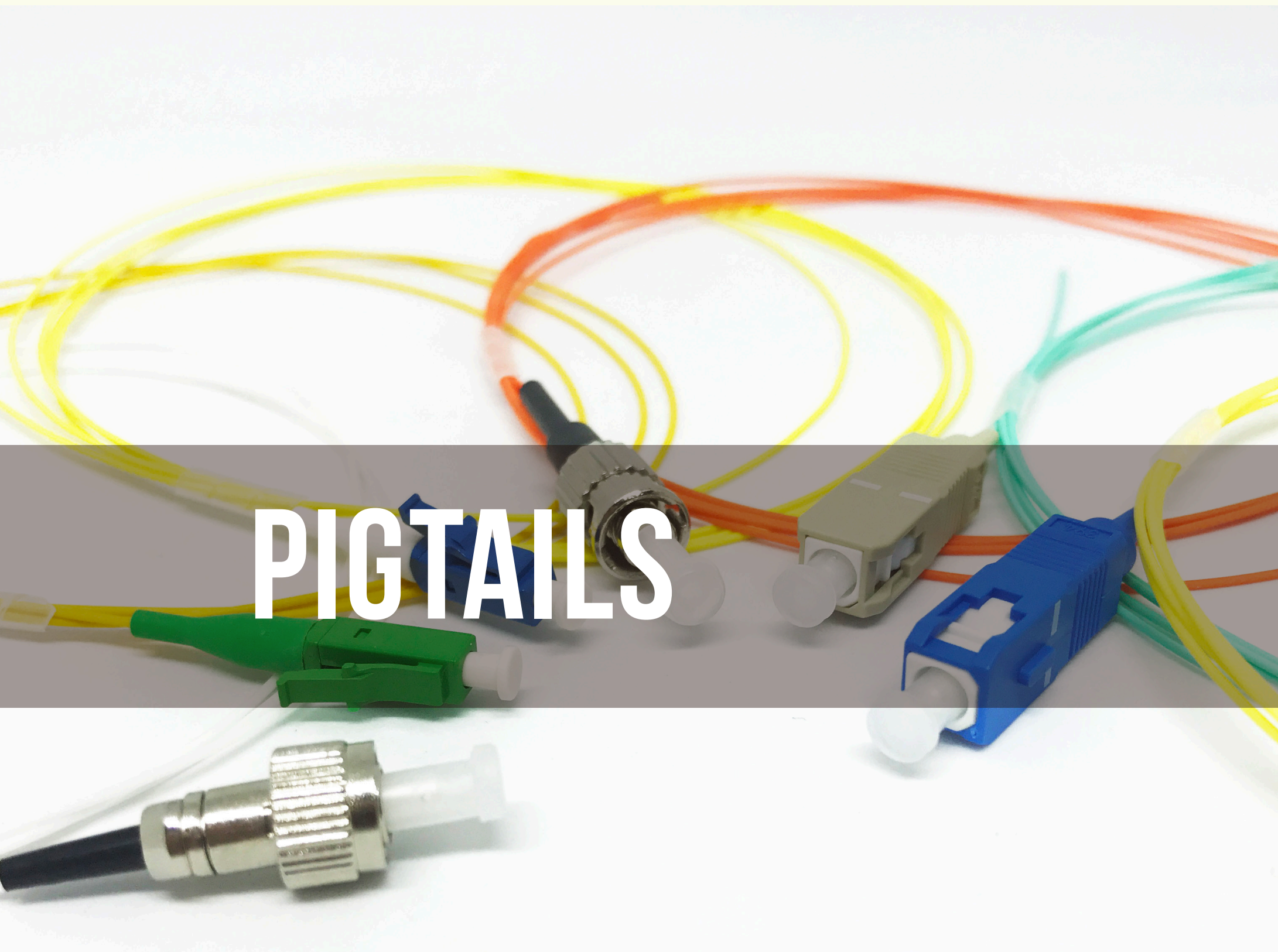
This catalogue introduces all basic information of each fiber optic components.

**“HIGH-CAPACITY FIBER OPTIC NETWORKS WILL BE THE INFORMATION
SUPERHIGHWAYS OF TOMORROW!”**

TABLE OF CONTENTS ■

PIGTAIL	04
PATCHCORD	16
BREAKOUT	28
CONNECTORS	32
FAST - CONNECTORS	38
ADAPTERS	42
ATTENUATORS	56
OTHERS	62

**YOU HAVE TO MAKE IT
DIFFERENT!**



PIGTAILS

A fiber pigtail is a single, short optical fiber that has an optical connector pre-installed on one end and a length of exposed fiber at the other end.

SC/UPC SINGLEMODE



SC/UPC MULTIMODE



SC/APC



OPTICAL PROPERTIES

- Maximum IL:
SM $\leq 0.20\text{dB}$
MM: $\leq 0.30\text{dB}$
- Typical IL:
SM $\leq 0.15\text{dB}$
MM: $\leq 0.20\text{dB}$
- Return Loss:
SM(UPC) $\geq 55.0\text{ dB}$,
(APC) $\geq 60.0\text{dB}$.

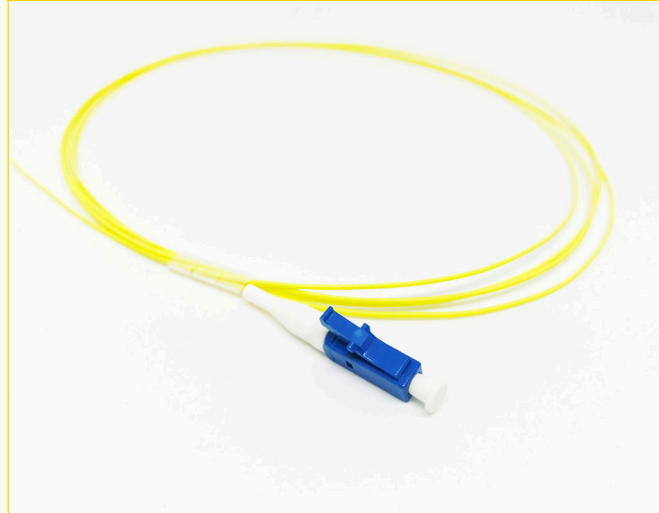
MAIN FEATURES

- Available with any type of connector: SC, LC, ST, FC, MTRJ, MU.
- Polishing type: UPC and APC
- Any type of fiber: SM G652D, SM G655, SM G657A1, SM G657A2, SM G657B3, MM OM1, MM OM2, MM OM3, MM OM4.
- Available as tight-buffer, semi-tight buffer or easy strip/loose tube.
- Cable outer diameter (O.D): 0.9mm, 2.0mm, 3.0mm (simplex or duplex zipcord), customized O.D. available.
- Jacket available in LSZH (Low Smoke Zero Halogen), LSZH-FH (Flame Retardant UL94 V=0), PE or PVC Riser/Plenum (flame-retardant PVC).
- Any length
- Available in 6 or 12 color bundles.
- Several boots (colors, length) and dust cap (color, shape)

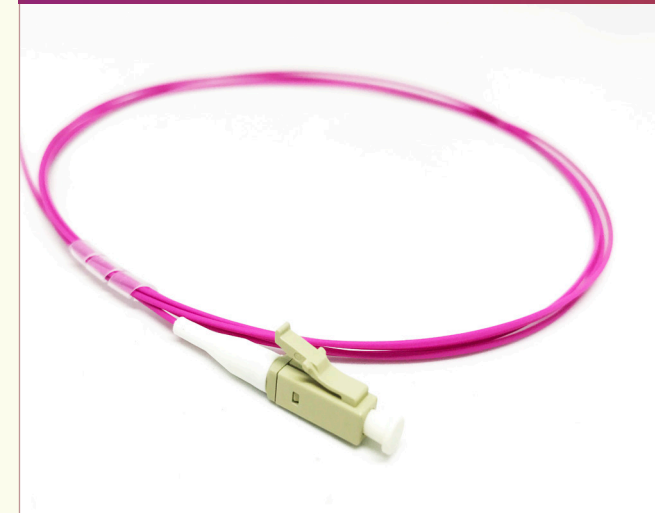
PIGTAILS

A fiber pigtail is a single, short optical fiber that has an optical connector pre-installed on one end and a length of exposed fiber at the other end.

LC/UPC SINGLEMODE



LC/UPC MULTIMODE



LC/APC



OPTICAL PROPERTIES

- Maximum IL:
SM $\leq 0.20\text{dB}$
MM: $\leq 0.30\text{dB}$
- Typical IL:
SM $\leq 0.15\text{dB}$
MM: $\leq 0.20\text{dB}$
- Return Loss:
SM(UPC) $\geq 55.0\text{ dB}$,
(APC) $\geq 60.0\text{dB}$.

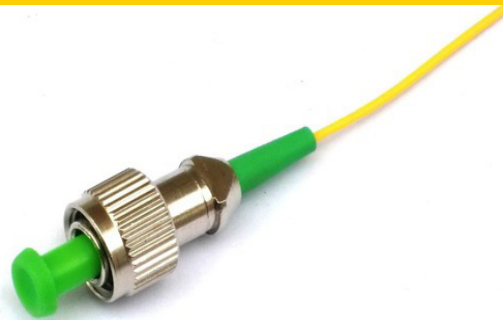
MAIN FEATURES

- Available with any type of connector: SC, LC, ST, FC, MTRJ, MU.
- Polishing type: UPC and APC
- Any type of fiber: SM G652D, SM G655, SM G657A1, SM G657A2, SM G657B3, MM OM1, MM OM2, MM OM3, MM OM4.
- Available as tight-buffer, semi-tight buffer or easy strip/loose tube.
- Cable outer diameter (O.D): 0.9mm, 2.0mm, 3.0mm (simplex or duplex zipcord), customized O.D. available.
- Jacket available in LSZH (Low Smoke Zero Halogen), LSZH-FH (Flame Retardant UL94 V=0), PE or PVC Riser/Plenum (flame-retardant PVC).
- Any length
- Available in 6 or 12 color bundles.
- Several boots (colors, length) and dust cap (color, shape)

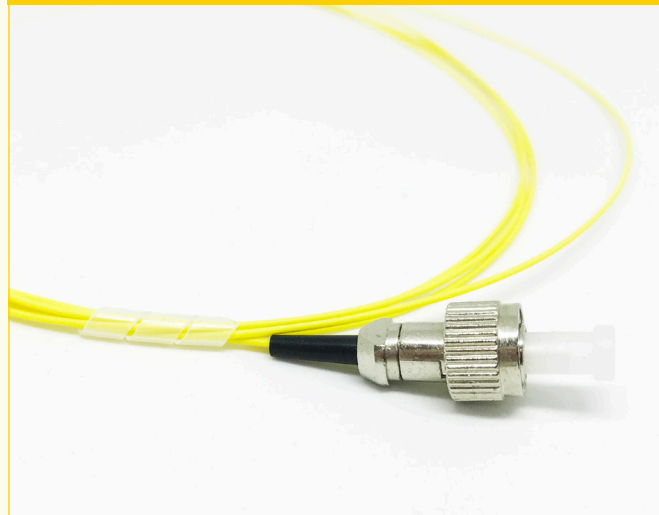
■ PIGTAILS

A fiber pigtail is a single, short optical fiber that has an optical connector pre-installed on one end and a length of exposed fiber at the other end.

FC/APC SINGLE MODE



FC/UPC SINGLEMODE



FC/UPC MULTIMODE



MAIN FEATURES

- Available with any type of connector: SC, LC, ST, FC, MTRJ, MU.
- Polishing type: UPC and APC
- Any type of fiber: SM G652D, SM G655, SM G657A1, SM G657A2, SM G657B3, MM OM1, MM OM2, MM OM3, MM OM4.
- Available as tight-buffer, semi-tight buffer or easy strip/loose tube.
- Cable outer diameter (O.D): 0.9mm, 2.0mm, 3.0mm (simplex or duplex zipcord), customized O.D. available.
- Jacket available in LSZH (Low Smoke Zero Halogen), LSZH-FH (Flame Retardant UL94 V=0), PE or PVC Riser/Plenum (flame-retardant PVC).
- Any length
- Available in 6 or 12 color bundles.
- Several boots (colors and length) and dust cap (color, shape)

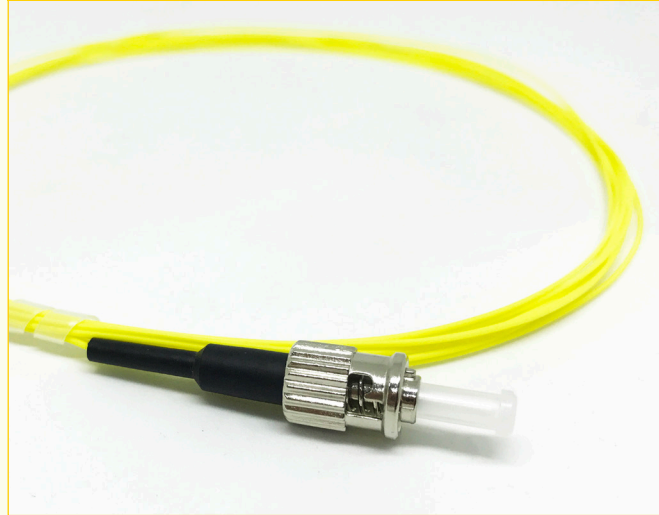
OPTICAL PROPERTIES

- Maximum IL: SM $\leq 0.20\text{dB}$ MM: $\leq 0.30\text{dB}$
- Typical IL: SM $\leq 0.15\text{dB}$ MM: $\leq 0.20\text{dB}$
- Return Loss: SM(UPC) $\geq 55.0\text{ dB}$, (APC) $\geq 60.0\text{dB}$.

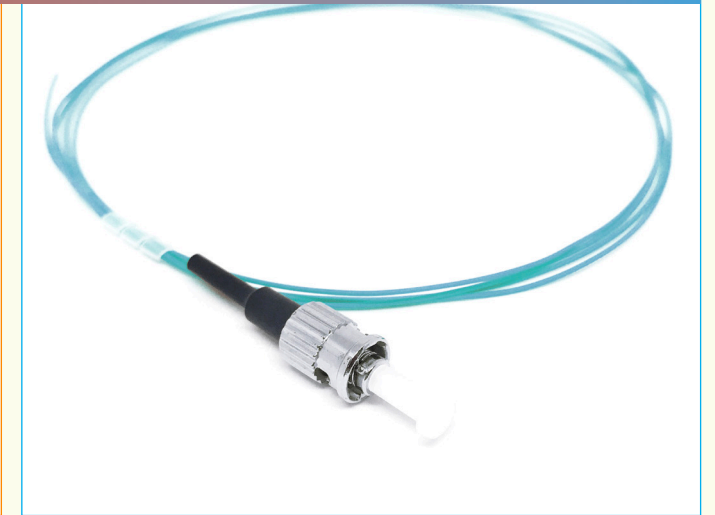
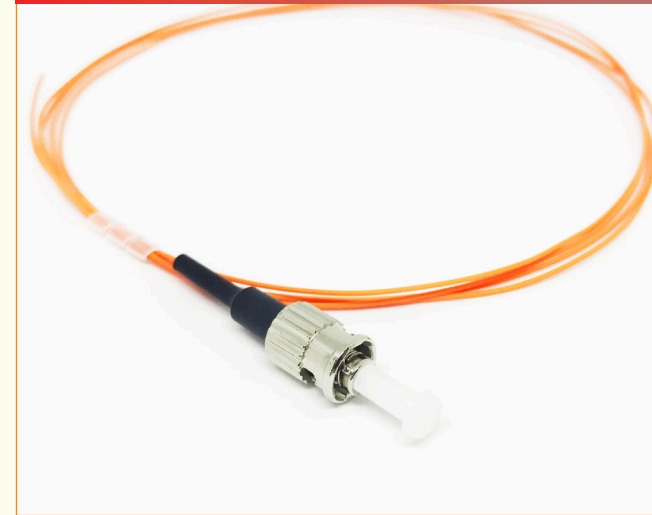
PIGTAILS

A fiber pigtail is a single, short optical fiber that has an optical connector pre-installed on one end and a length of exposed fiber at the other end.

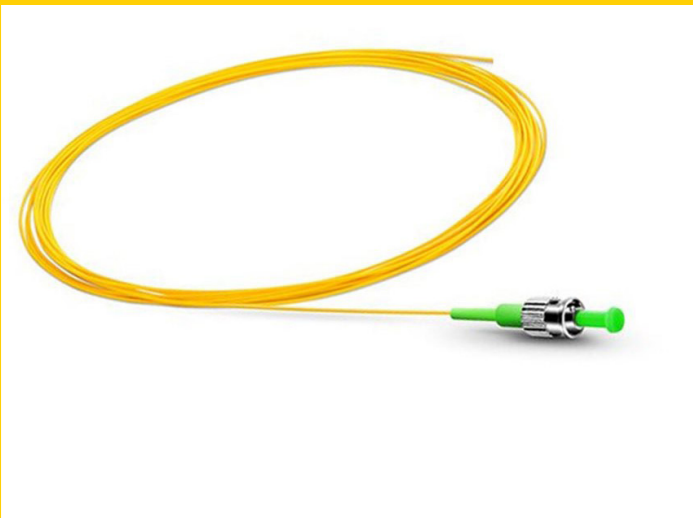
ST/UPC SINGLEMODE



ST/UPC MULTIMODE



ST/APC SINGLE MODE



OPTICAL PROPERTIES

- Maximum IL:
SM $\leq 0.20\text{dB}$
MM: $\leq 0.30\text{dB}$
- Typical IL:
SM $\leq 0.15\text{dB}$
MM: $\leq 0.20\text{dB}$
- Return Loss:
SM(UPC) $\geq 55.0\text{ dB}$,
(APC) $\geq 60.0\text{dB}$.

MAIN FEATURES

- Available with any type of connector: SC, LC, ST, FC, MTRJ, MU.
- Polishing type: UPC and APC
- Any type of fiber: SM G652D, SM G655, SM G657A1, SM G657A2, SM G657B3, MM OM1, MM OM2, MM OM3, MM OM4.
- Available as tight-buffer, semi-tight buffer or easy strip/loose tube.
- Cable outer diameter (O.D): 0.9mm, 2.0mm, 3.0mm (simplex or duplex zipcord), customized O.D. available.
- Jacket available in LSZH (Low Smoke Zero Halogen), LSZH-FH (Flame Retardant UL94 V=0), PE or PVC Riser/Plenum (flame-retardant PVC).
- Any length
- Available in 6 or 12 color bundles.
- Several boots (colors, length) and dust cap (color, shape)

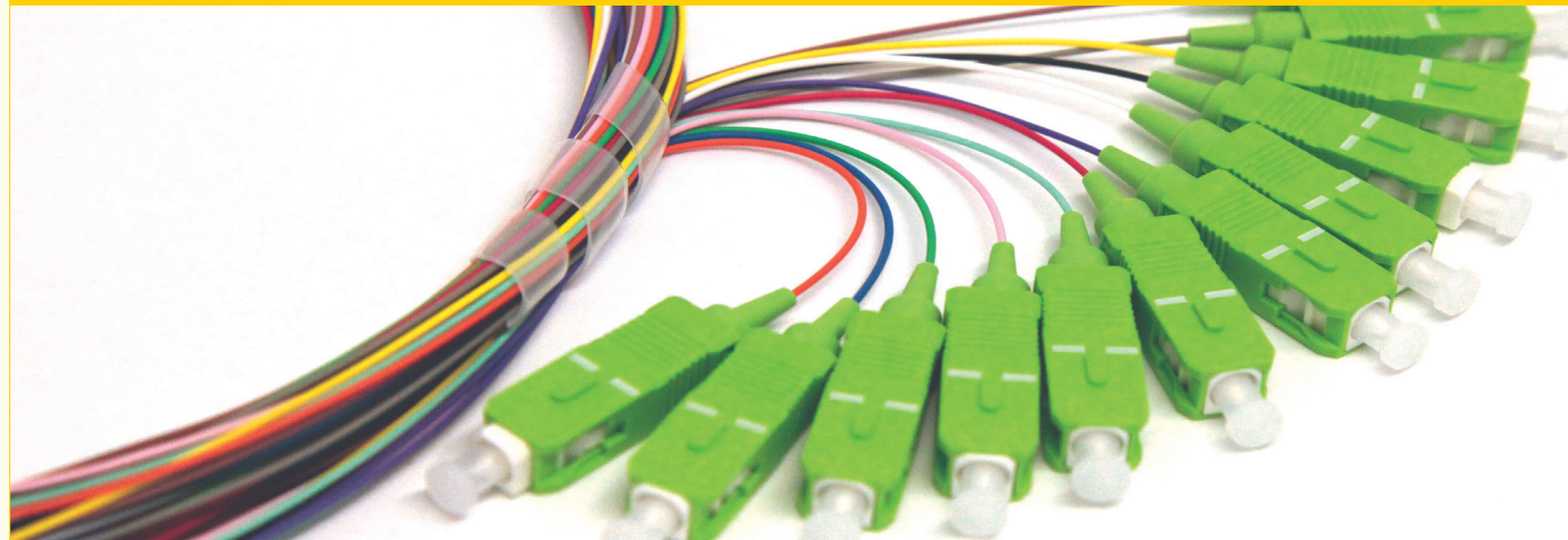
PIGTAILS

A fiber pigtail is a single, short optical fiber that has an optical connector pre-installed on one end and a length of exposed fiber at the other end.

OUTDOOR PIGTAIL



MULTICOLOR PIGTAIL

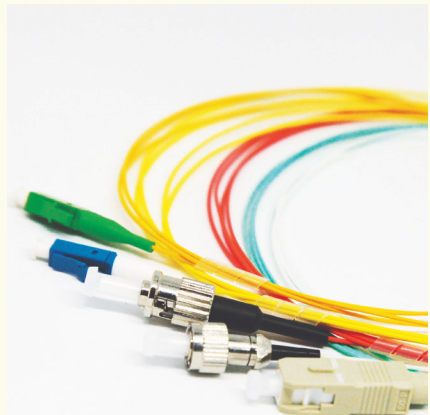
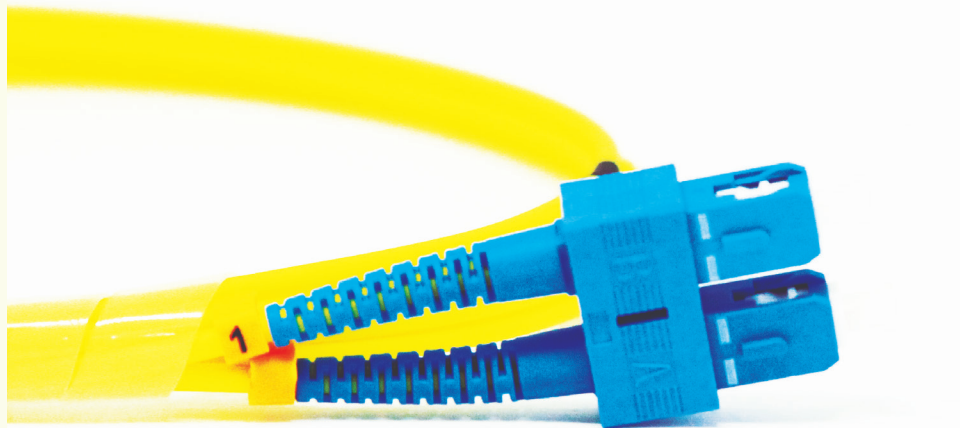
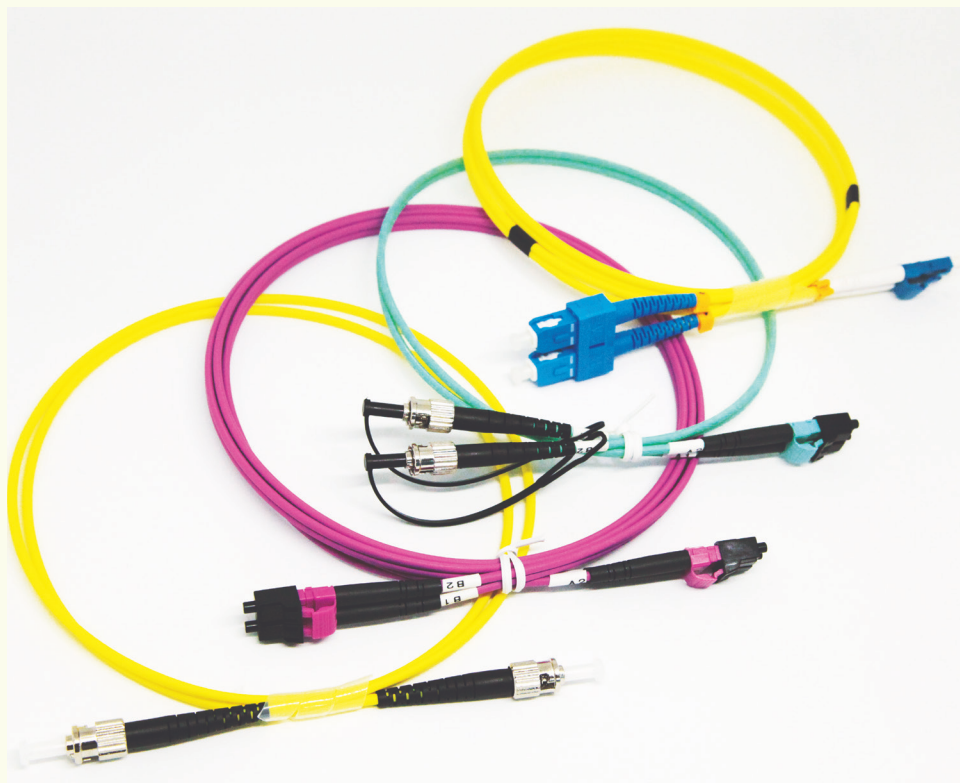


OPTICAL PROPERTIES

- Maximum IL:
SM $\leq 0.20\text{dB}$
MM: $\leq 0.30\text{dB}$
- Typical IL:
SM $\leq 0.15\text{dB}$
MM: $\leq 0.20\text{dB}$
- Return Loss:
SM(UPC) $\geq 55.0\text{ dB}$,
(APC) $\geq 60.0\text{dB}$.

MAIN FEATURES

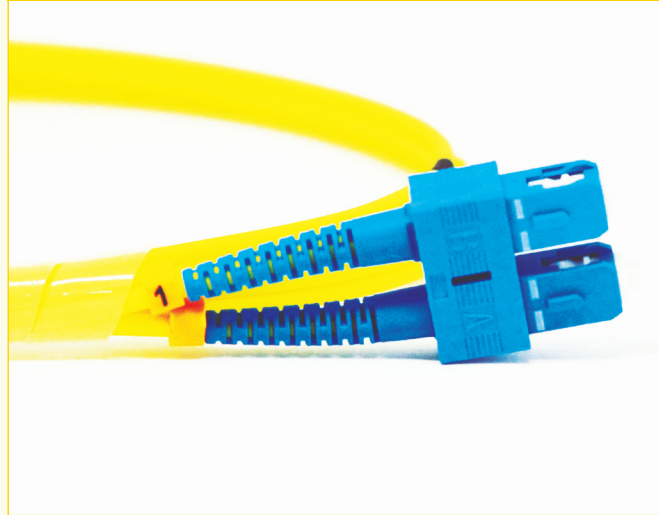
- Available with any type of connector: SC, LC, ST, FC, MTRJ, MU.
- Polishing type: UPC and APC
- Any type of fiber: SM G652D, SM G655, SM G657A1, SM G657A2, SM G657B3, MM OM1, MM OM2, MM OM3, MM OM4.
- Available as tight-buffer, semi-tight buffer or easy strip/loose tube.
- Cable outer diameter (O.D): 0.9mm, 2.0mm, 3.0mm (simplex or duplex zipcord), customized O.D. available.
- Jacket available in LSZH (Low Smoke Zero Halogen), LSZH-FH (Flame Retardant UL94 V=0), PE or PVC Riser/Plenum (flame-retardant PVC).
- Any length
- Available in 6 or 12 color bundles.
- Several boots (colors, length) and dust cap (color, shape)



PATCHCORDS

A fiber optic patch cord is a fiber optic cable capped at either end with connectors that allow it to be rapidly and conveniently connected to CATV, an optical switch or other telecommunication equipment.

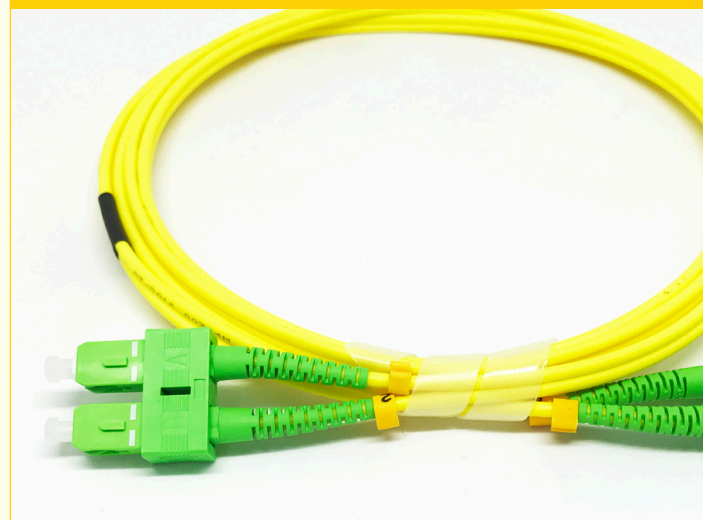
SC/UPC SINGLEMODE



SC/UPC MULTIMODE



SC/APC SINGLEMODE



OPTICAL PROPERTIES

- Maximum IL:
SM $\leq 0.20\text{dB}$
MM: $\leq 0.30\text{dB}$
- Typical IL:
SM $\leq 0.15\text{dB}$
MM: $\leq 0.20\text{dB}$
- Return Loss:
SM(UPC) $\geq 55.0\text{ dB}$,
(APC) $\geq 60.0\text{dB}$.

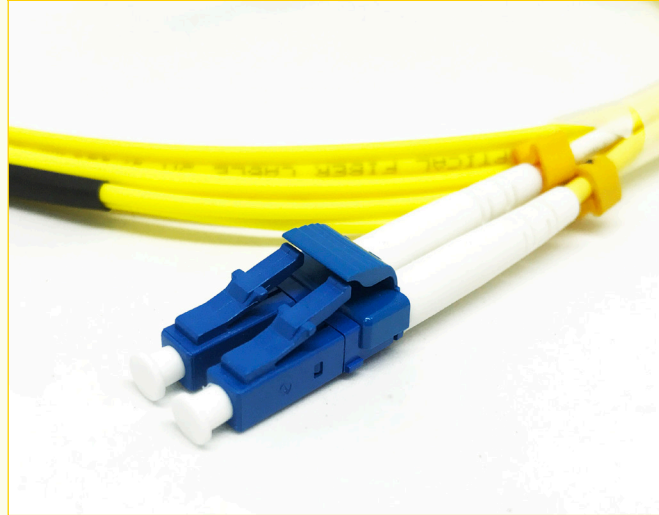
MAIN FEATURES

- Available with any type of connector: SC, LC, ST, FC, MTRJ, MU.
- Polishing type: UPC and APC
- Any type of fiber: SM G652D, SM G655, SM G657A1, SM G657A2, SM G657B3, MM OM1, MM OM2, MM OM3, MM OM4.
- Available as tight-buffer, semi-tight buffer or easy strip/loose tube.
- Cable outer diameter (O.D): 0.9mm, 2.0mm, 3.0mm (simplex or duplex zipcord), customized O.D. available.
- Jacket available in LSZH (Low Smoke Zero Halogen), LSZH-FH (Flame Retardant UL94 V=0), PE or PVC Riser/Plenum (flame-retardant PVC).
- Any length
- Available in 6 or 12 color bundles.
- Several boots (colors, length) and dust cap (color, shape)

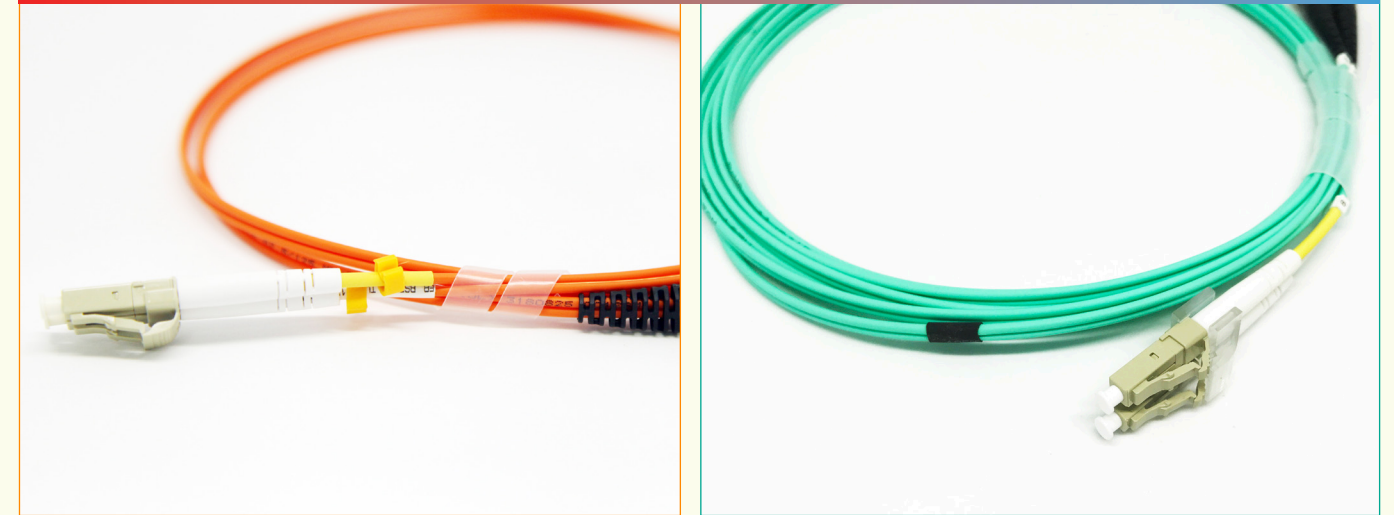
PATCHCORDS

A fiber optic patch cord is a fiber optic cable capped at either end with connectors that allow it to be rapidly and conveniently connected to CATV, an optical switch or other telecommunication equipment.

LC/UPC SINGLEMODE



LC/UPC MULTIMODE



LC/APC SINGLEMODE



OPTICAL PROPERTIES

- Maximum IL:
SM $\leq 0.20\text{dB}$
MM: $\leq 0.30\text{dB}$
- Typical IL:
SM $\leq 0.15\text{dB}$
MM: $\leq 0.20\text{dB}$
- Return Loss:
SM(UPC) $\geq 55.0\text{ dB}$,
(APC) $\geq 60.0\text{dB}$.

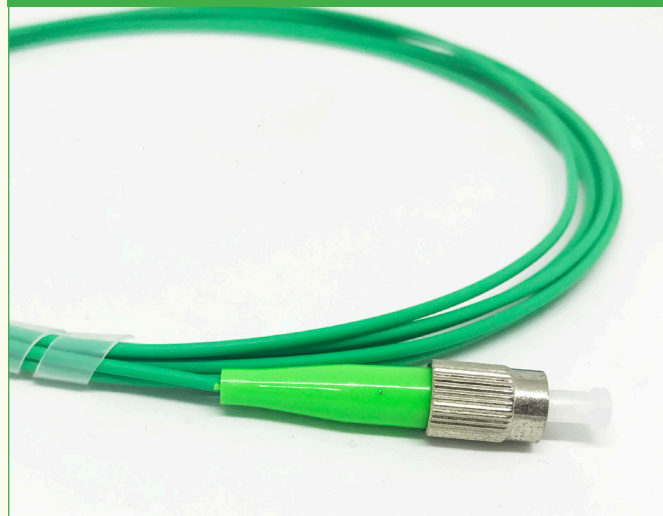
MAIN FEATURES

- Available with any type of connector: SC, LC, ST, FC, MTRJ, MU.
- Polishing type: UPC and APC
- Any type of fiber: SM G652D, SM G655, SM G657A1, SM G657A2, SM G657B3, MM OM1, MM OM2, MM OM3, MM OM4.
- Available as tight-buffer, semi-tight buffer or easy strip/loose tube.
- Cable outer diameter (O.D): 0.9mm, 2.0mm, 3.0mm (simplex or duplex zipcord), customized O.D. available.
- Jacket available in LSZH (Low Smoke Zero Halogen), LSZH-FH (Flame Retardant UL94 V=0), PE or PVC Riser/Plenum (flame-retardant PVC).
- Any length
- Available in 6 or 12 color bundles.
- Several boots (colors, length) and dust cap (color, shape)

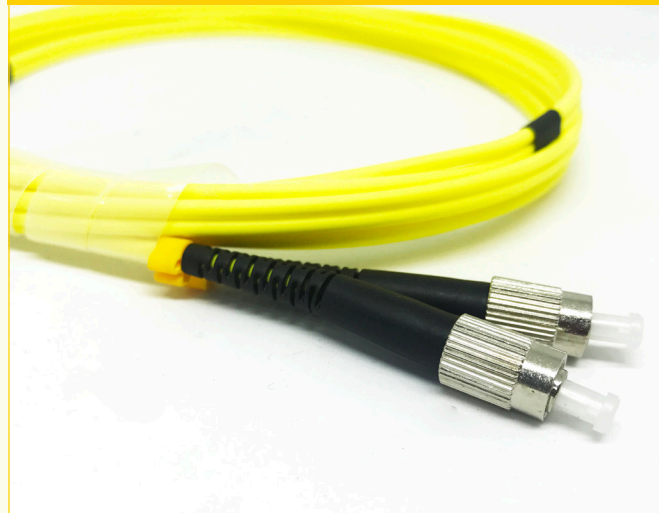
■ PATCHCORDS

A fiber optic patch cord is a fiber optic cable capped at either end with connectors that allow it to be rapidly and conveniently connected to CATV, an optical switch or other telecommunication equipment.

FC/APC SINGLEMODE



FC/UPC SINGLEMODE



FC/UPC MULTIMODE



MAIN FEATURES

- Available with any type of connector: SC, LC, ST, FC, MTRJ, MU.
- Polishing type: UPC and APC
- Any type of fiber: SM G652D, SM G655, SM G657A1, SM G657A2, SM G657B3, MM OM1, MM OM2, MM OM3, MM OM4.
- Available as tight-buffer, semi-tight buffer or easy strip/loose tube.
- Cable outer diameter (O.D): 0.9mm, 2.0mm, 3.0mm (simplex or duplex zipcord), customized O.D. available.
- Jacket available in LSZH (Low Smoke Zero Halogen), LSZH-FH (Flame Retardant UL94 V=0), PE or PVC Riser/Plenum (flame-retardant PVC).
- Any length
- Available in 6 or 12 color bundles.
- Several boots (colors and length) and dust cap (color, shape)

OPTICAL PROPERTIES

- Maximum IL: SM $\leq 0.20\text{dB}$ MM: $\leq 0.30\text{dB}$
- Typical IL: SM $\leq 0.15\text{dB}$ MM: $\leq 0.20\text{dB}$
- Return Loss: SM(UPC) $\geq 55.0\text{ dB}$, (APC) $\geq 60.0\text{dB}$.

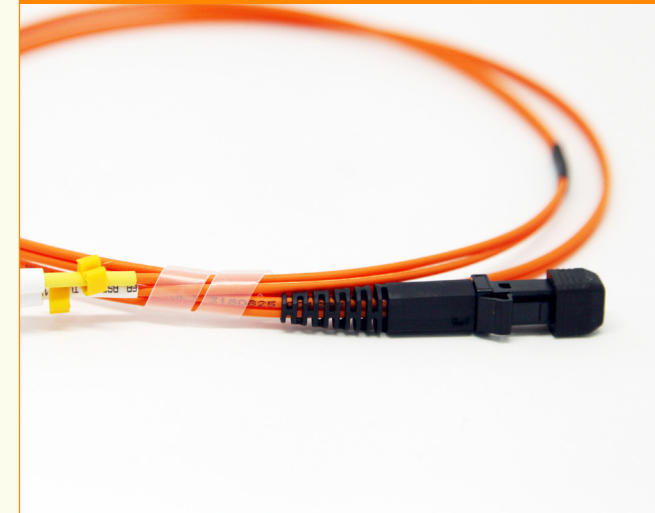
PATCHCORDS

A fiber optic patch cord is a fiber optic cable capped at either end with connectors that allow it to be rapidly and conveniently connected to CATV, an optical switch or other telecommunication equipment.

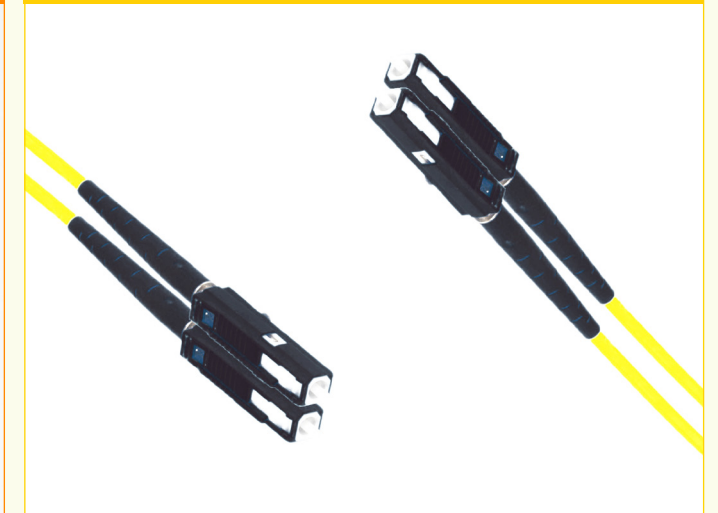
ST/UPC SINGLEMODE



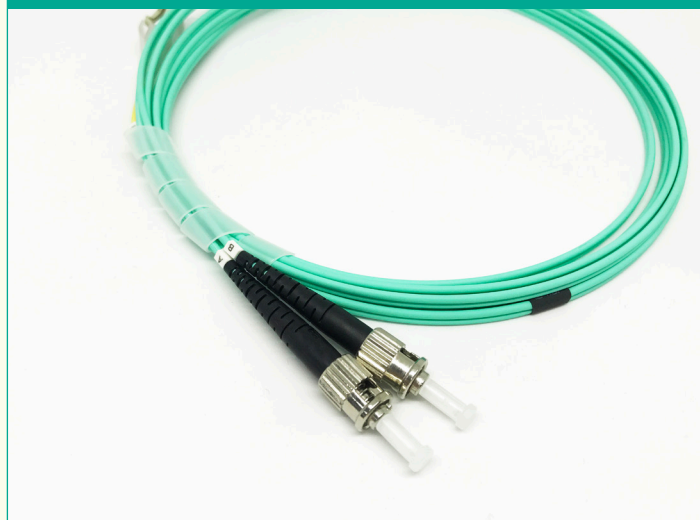
MTRJ



MU/UPC



ST/UPC MULTIMODE



OPTICAL PROPERTIES

- Maximum IL:
SM $\leq 0.20\text{dB}$
MM: $\leq 0.30\text{dB}$
- Typical IL:
SM $\leq 0.15\text{dB}$
MM: $\leq 0.20\text{dB}$
- Return Loss:
SM(UPC) $\geq 55.0\text{ dB}$,
(APC) $\geq 60.0\text{dB}$.

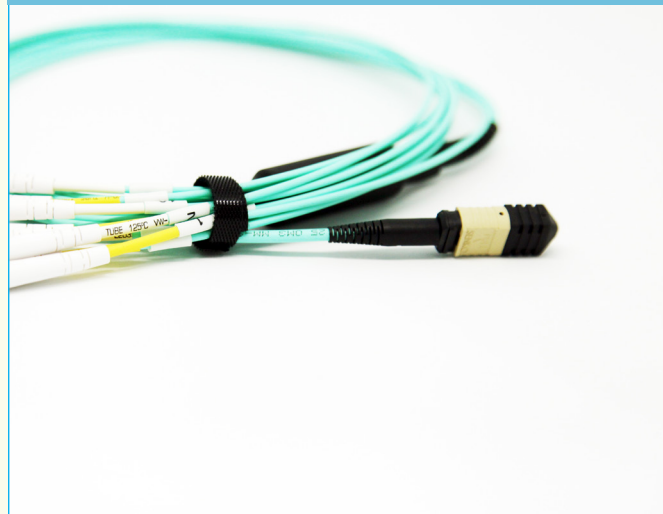
MAIN FEATURES

- Available with any type of connector: SC, LC, ST, FC, MTRJ, MU.
- Polishing type: UPC and APC
- Any type of fiber: SM G652D, SM G655, SM G657A1, SM G657A2, SM G657B3, MM OM1, MM OM2, MM OM3, MM OM4.
- Available as tight-buffer, semi-tight buffer or easy strip/loose tube.
- Cable outer diameter (O.D): 0.9mm, 2.0mm, 3.0mm (simplex or duplex zipcord), customized O.D. available.
- Jacket available in LSZH (Low Smoke Zero Halogen), LSZH-FH (Flame Retardant UL94 V=0), PE or PVC Riser/Plenum (flame-retardant PVC).
- Any length
- Available in 6 or 12 color bundles.
- Several boots (colors, length) and dust cap (color, shape)

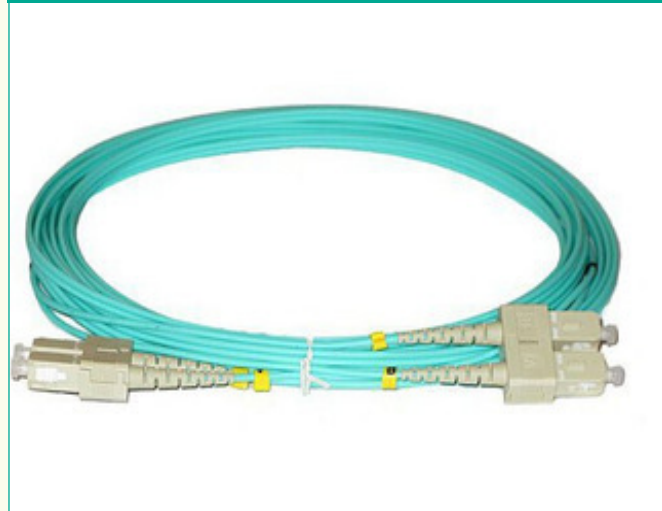
■ PATCHCORDS

A fiber optic patch cord is a fiber optic cable capped at either end with connectors that allow it to be rapidly and conveniently connected to CATV, an optical switch or other telecommunication equipment.

MPO



FLAT TWIN



ARMoured

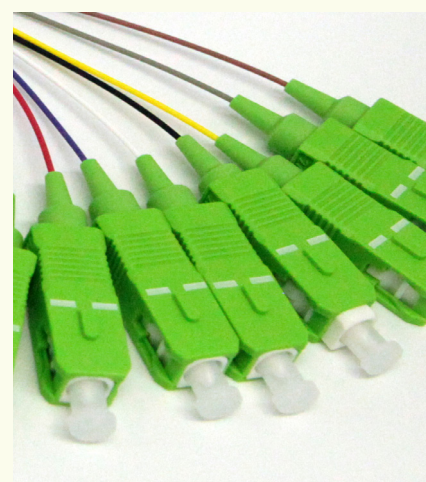
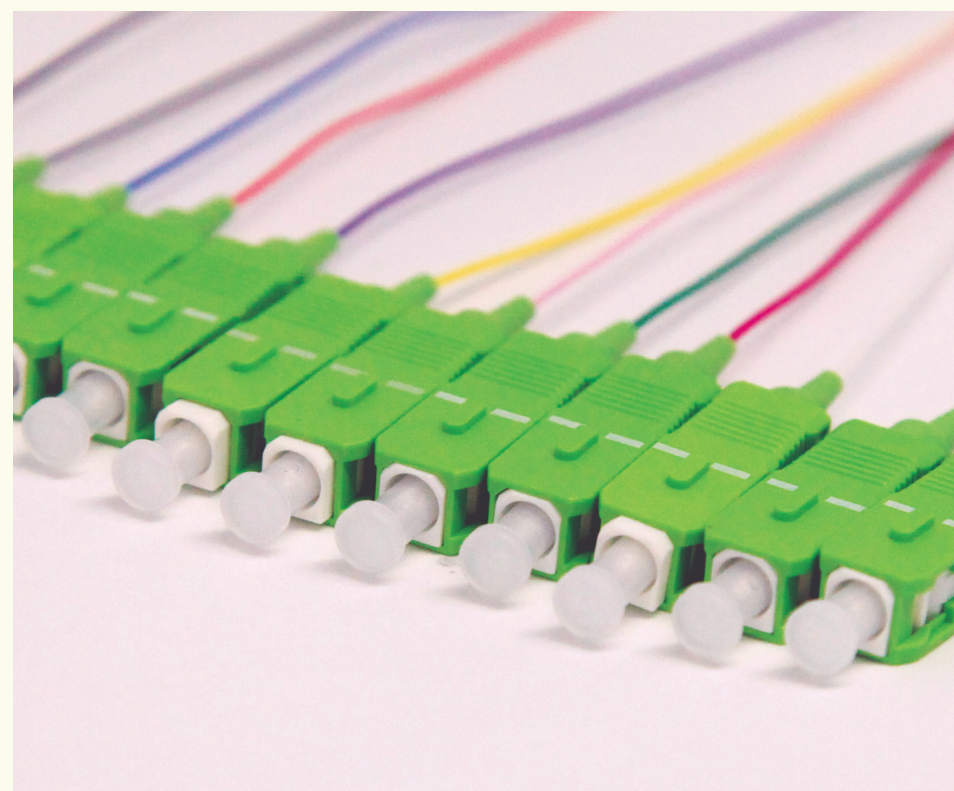


MAIN FEATURES

- Available with any type of connector: SC, LC, ST, FC, MTRJ, MU.
- Polishing type: UPC and APC
- Any type of fiber: SM G652D, SM G655, SM G657A1, SM G657A2, SM G657B3, MM OM1, MM OM2, MM OM3, MM OM4.
- Available as tight-buffer, semi-tight buffer or easy strip/loose tube.
- Cable outer diameter (O.D): 0.9mm, 2.0mm, 3.0mm (simplex or duplex zipcord), customized O.D. available.
- Jacket available in LSZH (Low Smoke Zero Halogen), LSZH-FH (Flame Retardant UL94 V=0), PE or PVC Riser/Plenum (flame-retardant PVC).
- Any length
- Available in 6 or 12 color bundles.
- Several boots (colors and length) and dust cap (color, shape)

OPTICAL PROPERTIES

- Maximum IL: SM $\leq 0.20\text{dB}$ MM: $\leq 0.30\text{dB}$
- Typical IL: SM $\leq 0.15\text{dB}$ MM: $\leq 0.20\text{dB}$
- Return Loss: SM(UPC) $\geq 55.0\text{ dB}$, (APC) $\geq 60.0\text{dB}$.



BREAKOUT

Breakout fiberoptic cable is an optical fiber cable containing several jacketed simplex optical fibers packaged together inside an outer jacket.

The design of breakout cable adds strength for ruggedized drops, however the cable is larger and more expensive than distribution-style cable.

12 cores

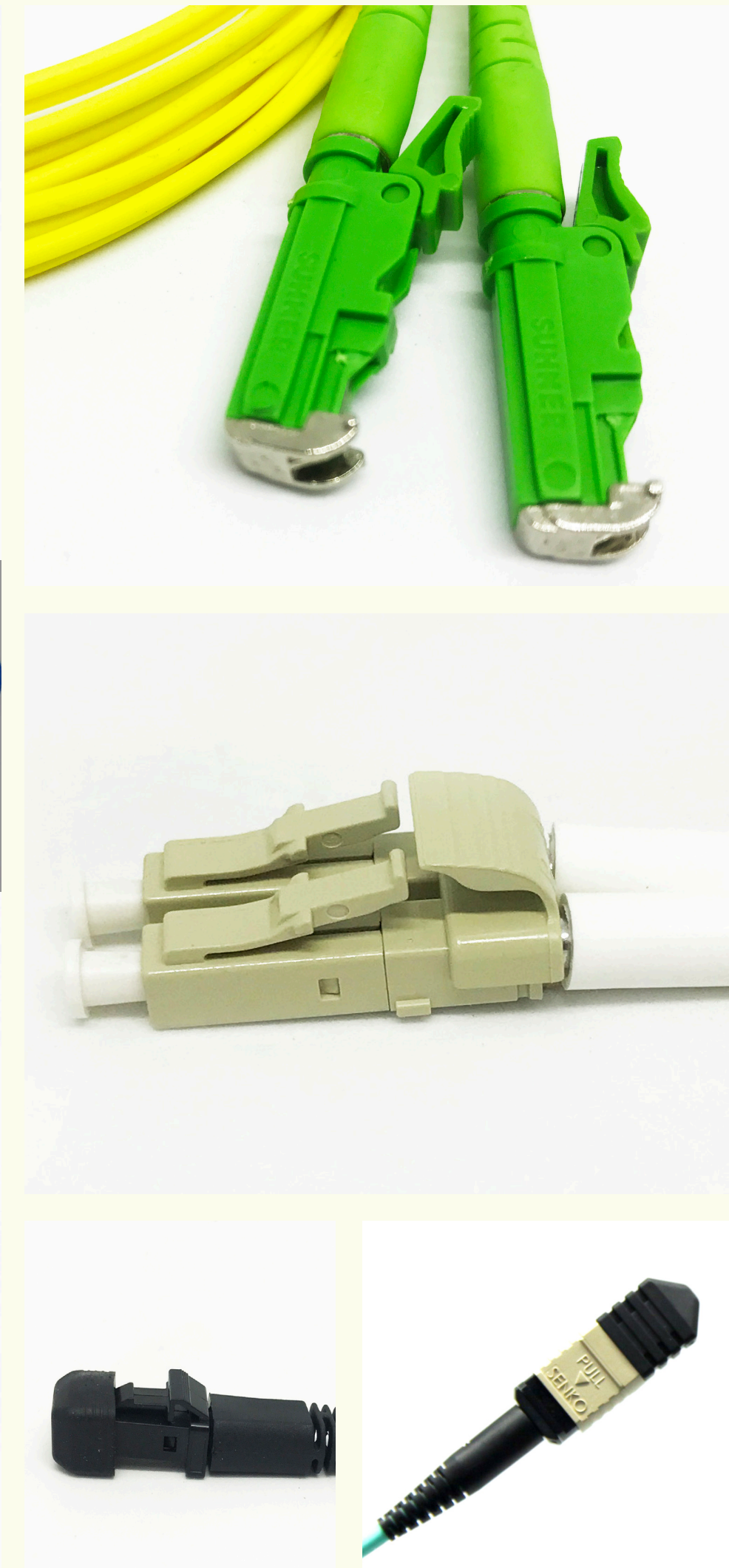
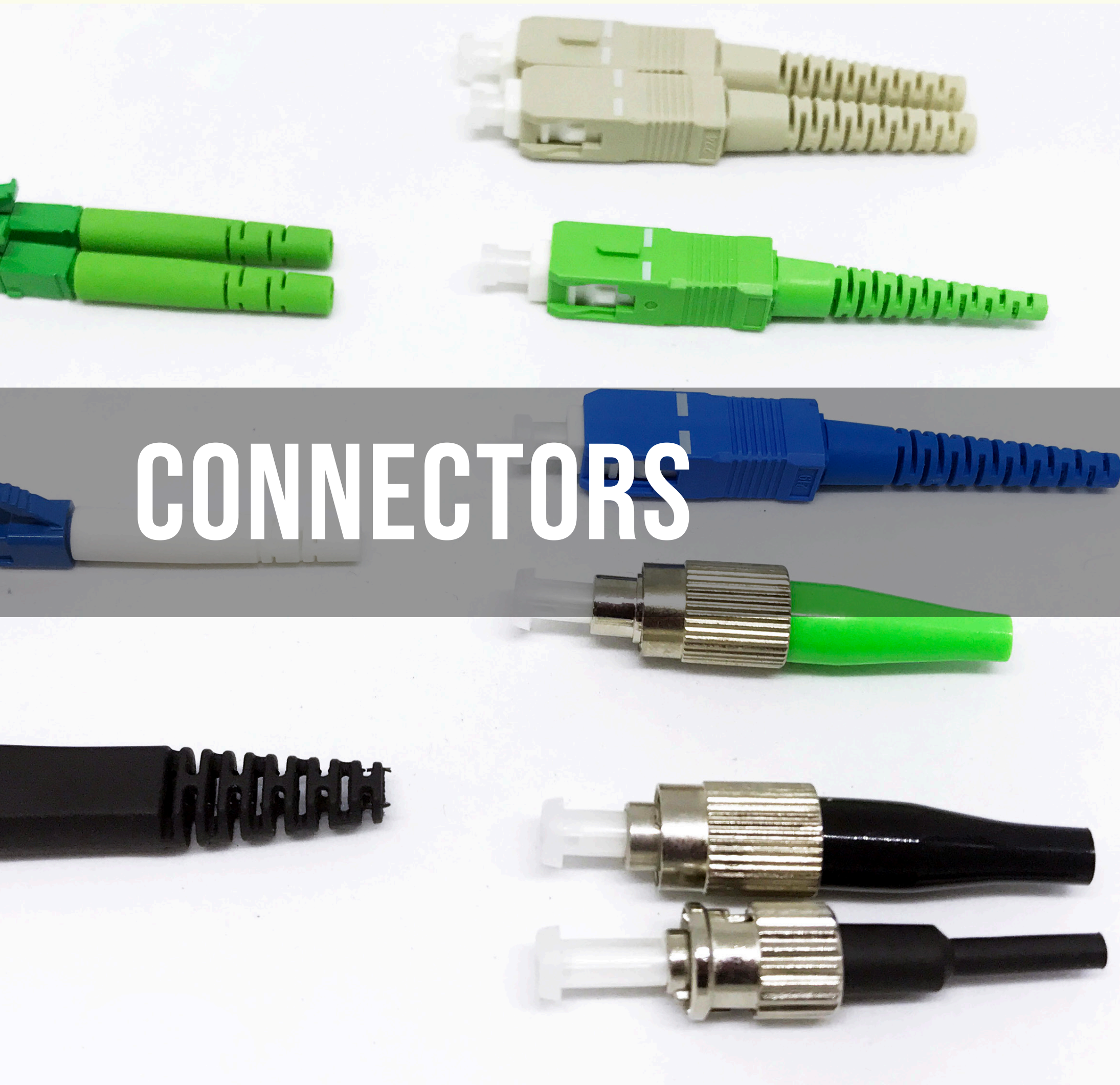


24 cores



MAIN FEATURES

- Available types of connector: SC, LC, ST, FC, MTRJ, MU.
- Concentricity: $<0.8 \mu\text{m}(\text{SM})$ and $<4.0\text{mm}(\text{MM})$, ferrules checked and assembled.
- With 2.5 mm high-precision ceramic ferrule (SC, ST, FC) or 1.25 mm (LC)
- Polishing type: UPC and APC (LC, SC, FC)
- Duplex or Simplex (SC, LC)
- For cable O.D. in the range 0.9 - 3.0mm
- Several boots (colors, length)



CONNECTORS

An optical fiber connector terminates the end of an optical fiber, and enables quicker connection and disconnection than splicing. The connectors mechanically couple and align the cores of fibers so light can pass. Better connectors lose very little light due to reflection or misalignment of the fibers.

SC/APC SM



SC/UPC SM



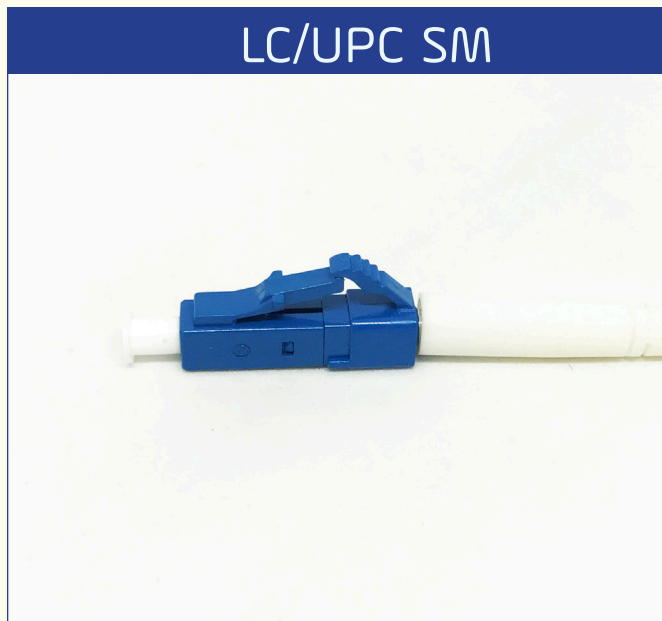
SC/UPC MM



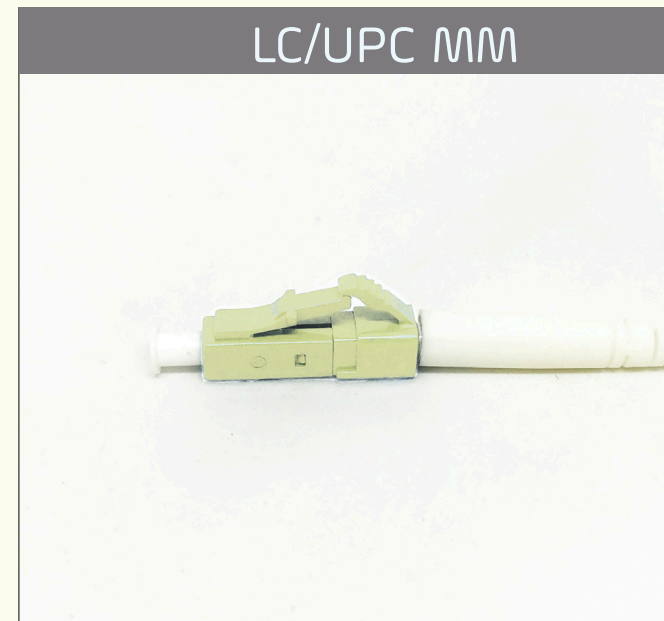
LC/APC SM



LC/UPC SM



LC/UPC MM



MAIN FEATURES

- Available types of connector: SC, LC, ST, FC, MTRJ, MU.
- Concentricity: $<0.8 \mu\text{m}$ (SM) and $<4.0\text{mm}$ (MM), ferrules checked and assembled.
- With 2.5 mm high-precision ceramic ferrule (SC, ST, FC) or 1.25 mm (LC)
- Polishing type: UPC and APC (LC, SC, FC)
- Duplex or Simplex (SC, LC)
- For cable O.D. in the range 0.9 - 3.0mm
- Several boots (colors, length)

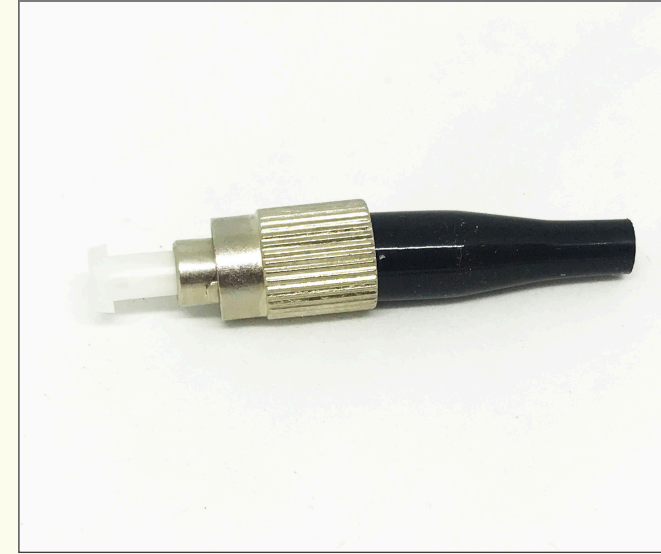
CONNECTORS

An optical fiber connector terminates the end of an optical fiber, and enables quicker connection and disconnection than splicing. The connectors mechanically couple and align the cores of fibers so light can pass. Better connectors lose very little light due to reflection or misalignment of the fibers.

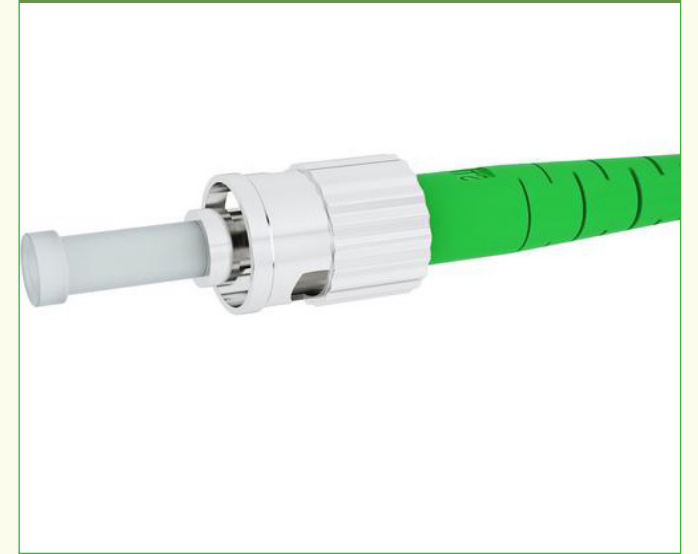
FC/APC



FC/UPC



ST/APC



MU/UPC



MTRJ/UPC

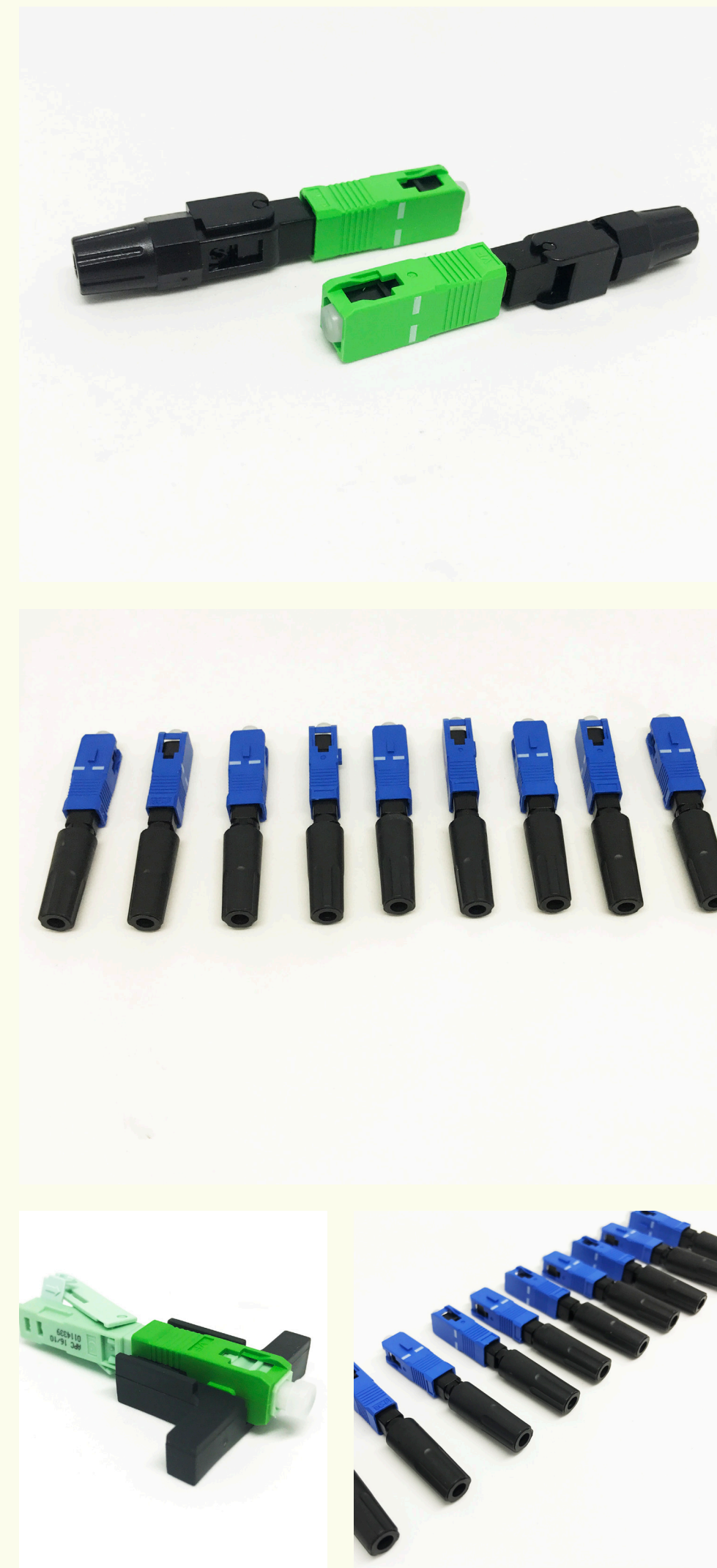
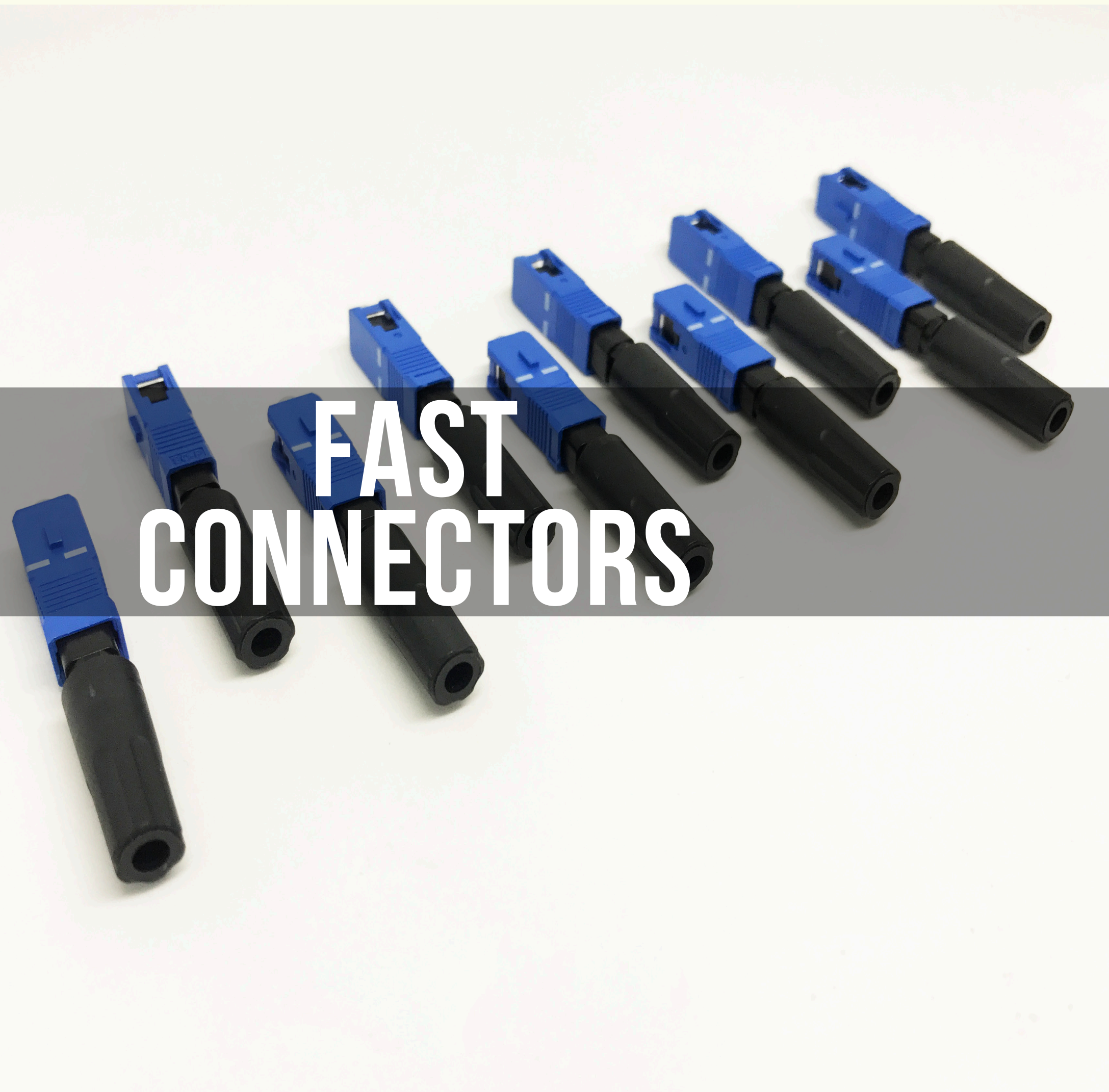


E2000



ST/UPC





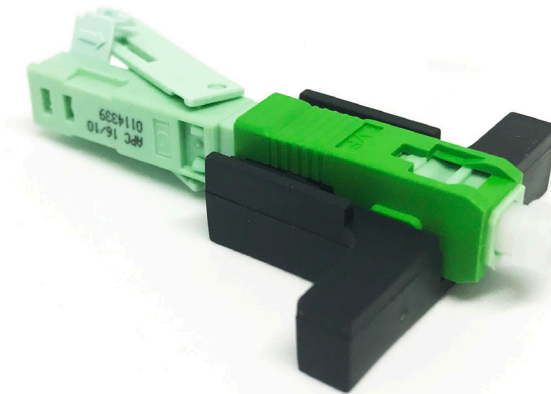
■ FAST CONNECTORS

An optical fiber connector terminates the end of an optical fiber, and enables quicker connection and disconnection than splicing. The connectors mechanically couple and align the cores of fibers so light can pass. Better connectors lose very little light due to reflection or misalignment of the fibers.

SC/UPC



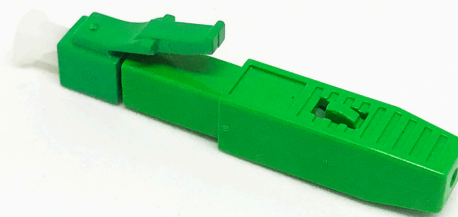
SC/APC



LC/UPC



LC/APC



FC/UPC



MAIN FEATURES

- Available types of connector: SC, LC, ST, FC, MTRJ, MU.
- Concentricity: $<0.8 \mu\text{m}$ (SM) and $<4.0\text{mm}$ (MM), ferrules checked and assembled.
- With 2.5 mm high-precision ceramic ferrule (SC, ST, FC) or 1.25 mm (LC)
- Polishing type: UPC and APC (LC, SC, FC)
- Duplex or Simplex (SC, LC)
- For cable O.D. in the range 0.9 - 3.0mm
- Several boots (colors, length)



ADAPTERS

Fiber optic adapters (also called couplers) are designed to connect two fiber optic cables together. They come in versions to connect single fibers together (simplex), two fibers together (duplex), or sometimes four fibers together (quad).

SC/APC SX ZIRCONIA WITH FLANGE



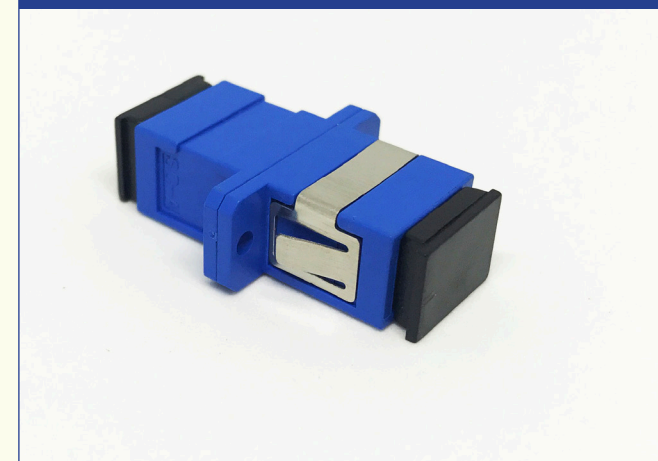
SC/APC DX ZIRCONIA WITH FLANGE



SC/APC SX ZIRCONIA WITHOUT FLANGE WHITEGREEN



SC/UPC SX ZIRCONIA WITHOUT FLANGE



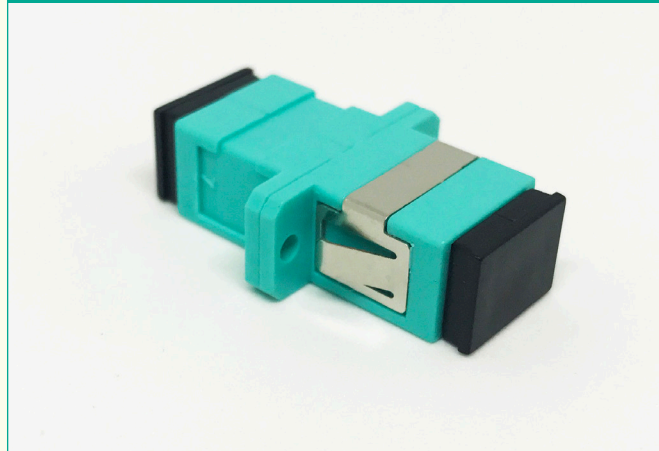
MAIN FEATURES

- Available types of connector: SC, LC, ST, FC, MTRJ, MU.
- With zirconia ceramic sleeve or phosphore bronze sleeve
- Regular adapters F-F and hybrid types
- Female-Female & Female-male
- Simplex, Duplex, quadruplex
- Plastic or metal
- With or without flange
- Several colors available for the plastic housing and the dust cap
- Insertion loss: < 0.20 dB
- Durability: > 1000 matings.

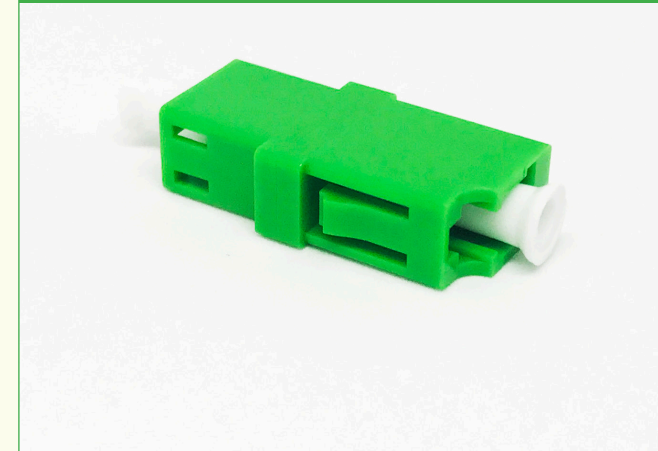
ADAPTERS

Fiber optic adapters (also called couplers) are designed to connect two fiber optic cables together. They come in versions to connect single fibers together (simplex), two fibers together (duplex), or sometimes four fibers together (quad).

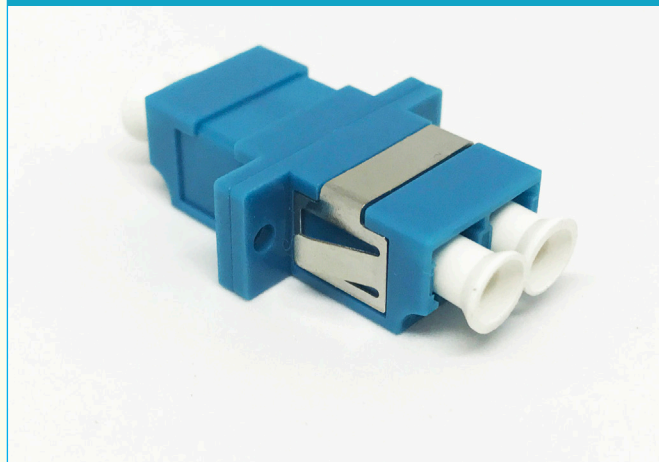
SC OM3 SX ZIRCONIA
WITH FLANGE



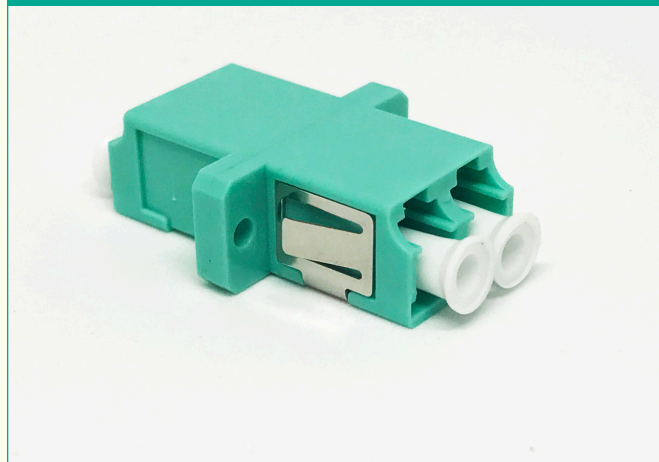
LC/APC SX ZIRCONIA
WITH FLANGE



LC/UPC SM DX ZIRCONIA
WITH FLANGE



LC/UPC OM3 DX ZIRCONIA
WITHOUT FLANGE



LC/UPC OM3 QUAD
ZIRCONIA WITH FLANGE



MAIN FEATURES

- Available types of connector: SC, LC, ST, FC, MTRJ, MU.
- With zirconia ceramic sleeve or phosphore bronze sleeve
- Regular adapters F-F and hybrid types
- Female-Female & Female-male
- Simplex, Duplex, quadruplex
- Plastic or metal
- With or without flange
- Several colors available for the plastic housing and the dust cap
- Insertion loss: < 0.20 dB
- Durability: > 1000 matings.

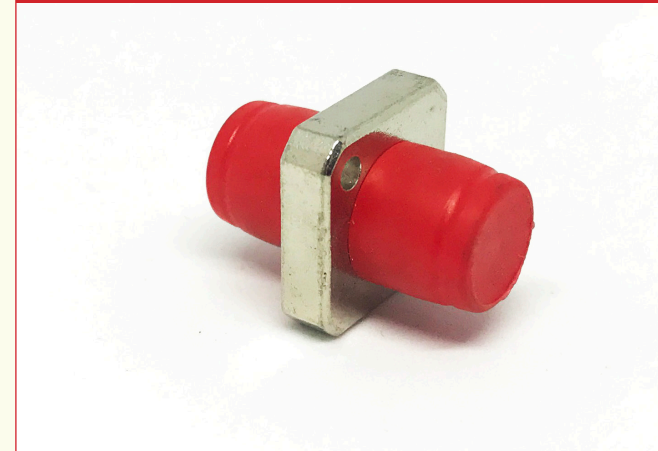
ADAPTERS

Fiber optic adapters (also called couplers) are designed to connect two fiber optic cables together. They come in versions to connect single fibers together (simplex), two fibers together (duplex), or sometimes four fibers together (quad).

FC/UPC SMALL D



FC/UPC SM SX SQUARE
METAL ZIRCONIA RED BOOT



MAIN FEATURES

- Available types of connector: SC, LC, ST, FC, MTRJ, MU.
- With zirconia ceramic sleeve or phosphore bronze sleeve
- Regular adapters F-F and hybrid types
- Female-Female & Female-male
- Simplex, Duplex, quadruplex
- Plastic or metal
- With or without flange
- Several colors available for the plastic housing and the dust cap
- Insertion loss: < 0.20 dB
- Durability: > 1000 matings.

ST/UPC MM SX



ST/UPC SM SX



MPO/UPC - MPO/UPC SM



ADAPTERS

Fiber optic adapters (also called couplers) are designed to connect two fiber optic cables together. They come in versions to connect single fibers together (simplex), two fibers together (duplex), or sometimes four fibers together (quad).

MU/UPC - MU/UPC SM



SC/UPC SX METAL ZIRCONIA WITH FLANGE



MTRJ/UPC - MTRJ/UPC



SC/UPC DX METAL ZIRCONIA WITH FLANGE



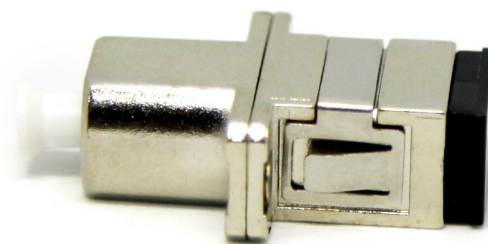
MAIN FEATURES

- Available types of connector: SC, LC, ST, FC, MTRJ, MU.
- With zirconia ceramic sleeve or phosphore bronze sleeve
- Regular adapters female-female and hybrid types
- Female-Female and Female-male
- Simplex, Duplex, quadruplex
- Plastic or metal
- With or without flange
- Several colors available for the plastic housing and the dust cap
- Insertion loss: < 0.20 dB
- Durability: > 1000 matings.

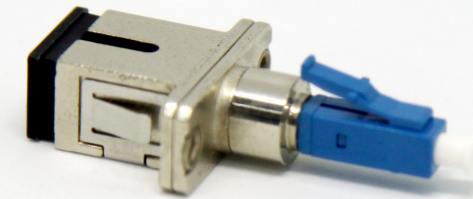
■ HYBRID ADAPTERS

Fiber optic adapters (also called couplers) are designed to connect two fiber optic cables together. They come in versions to connect single fibers together (simplex), two fibers together (duplex), or sometimes four fibers together (quad).

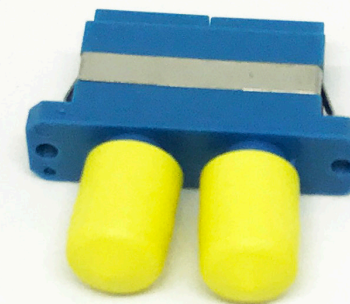
SC/UPC - LC/UPC SM SX FEMALE - FEMALE METAL



SC/UPC - LC/UPC SM SX
FEMALE - MALE METAL



SC/UPC-ST/UPC SM DX
FEMALE-FEMALE



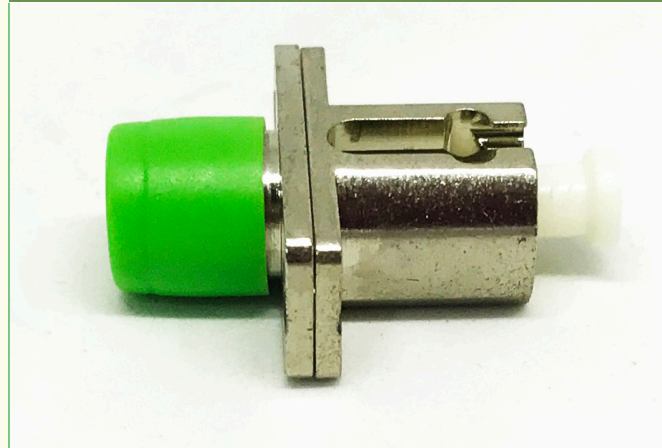
MAIN FEATURES

- Available types of connector: SC, LC, ST, FC, MTRJ, MU.
- With zirconia ceramic sleeve or phosphore bronze sleeve
- Regular adapters female-female and hybrid types
- Female-Female and Female-male
- Simplex, Duplex, quadruplex
- Plastic or metal
- With or without flange
- Several colors available for the plastic housing and the dust cap
- Insertion loss: < 0.20 dB
- Durability: > 1000 matings.

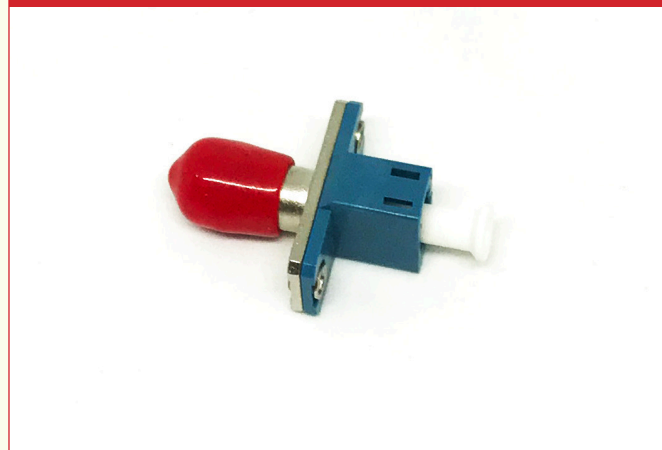
■ HYBRID ADAPTERS

Fiber optic adapters (also called couplers) are designed to connect two fiber optic cables together. They come in versions to connect single fibers together (simplex), two fibers together (duplex), or sometimes four fibers together (quad).

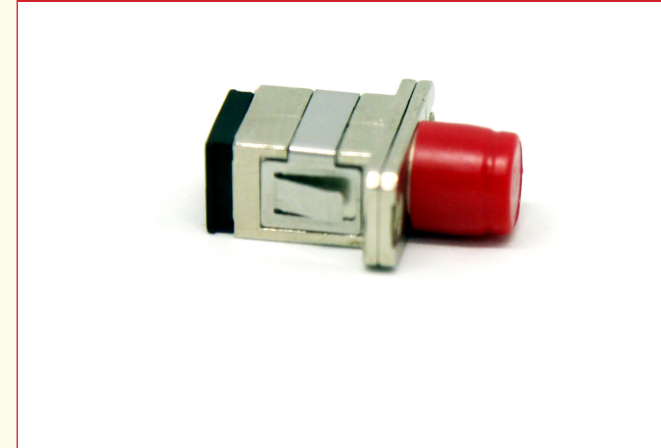
LC/UPC - FC/APC SM SX
FEMALE - FEMALE



LC/UPC-ST/UPC SM SX
FEMALE - FEMALE



SC/APC-FC/UPC MM SX
FEMALE - FEMALE



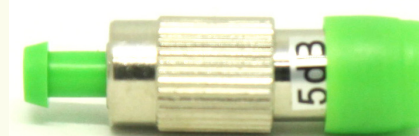
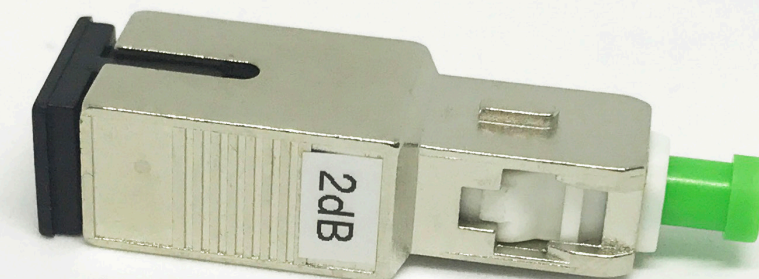
FC/UPC - ST/UPC SM SX
FEMALE - FEMALE



MAIN FEATURES

- Available types of connector: SC, LC, ST, FC, MTRJ, MU.
- With zirconia ceramic sleeve or phosphore bronze sleeve
- Regular adapters female-female and hybrid types
- Female-Female and Female-male
- Simplex, Duplex, quadruplex
- Plastic or metal
- With or without flange
- Several colors available for the plastic housing and the dust cap
- Insertion loss: < 0.20 dB
- Durability: > 1000 matings.

ATTENUATORS



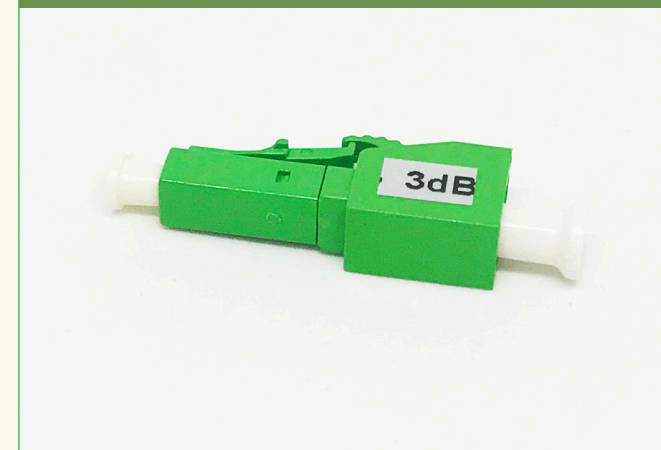
■ ATTENUATORS

An optical attenuator , or fiber optic attenuator, is a device used to reduce the power level of an optical signal, either in free space or in an optical fiber.

SC/APC SM MALE - FEMALE



LC/APC SM MALE - FEMALE



FC/APC SM MALE - FEMALE



ST/UPC SM MALE - FEMALE



LC/UPC SM MALE - FEMALE



MAIN FEATURES

- Available for connector types: SC, LC, ST, FC, MU.
- With 2.5mm zirconia ceramic ferrule (SC) or 1.25 mm (LC)
- Any number of dB for the attenuation in the range 1-20dB
- Metallic (connector style) or plastic (adapter style)
- Return Loss: SM UPC $\geq 50\text{dB}$, APC $\geq 60.0\text{dB}$
- Durability: 500 cycles.

■ ATTENUATORS

An optical attenuator, or fiber optic attenuator, is a device used to reduce the power level of an optical signal, either in free space or in an optical fiber.

SC/UPC SM MALE - FEMALE



LC/UPC SM FEMALE -
FEMALE ADAPTER STYLE



MU/UPC SM MALE-FEMALE



SC/APC SM FEMALE -
FEMALE, ADAPTER STYLE



FC/UPC, SM MALE - FEMALE



MAIN FEATURES

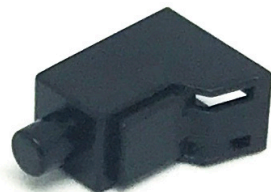
- Available for connector types: SC, LC, ST, FC, MU.
- With 2.5mm zirconia ceramic ferrule (SC) or 1.25 mm (LC)
- Any number of dB for the attenuation in the range 1-20dB
- Metallic (connector style) or plastic (adapter style)
- Return Loss: SM UPC $\geq 50\text{dB}$, APC $\geq 60.0\text{dB}$
- Durability: 500 cycles.

OTHERS



OTHERS

LC COVER DUST CAP



SC/FC/ST LONG TAIL DUST CAP



VISUAL FAULT LOCATION



CABLE MARKER RINGS



90 DEGREES ANGLED BOOT



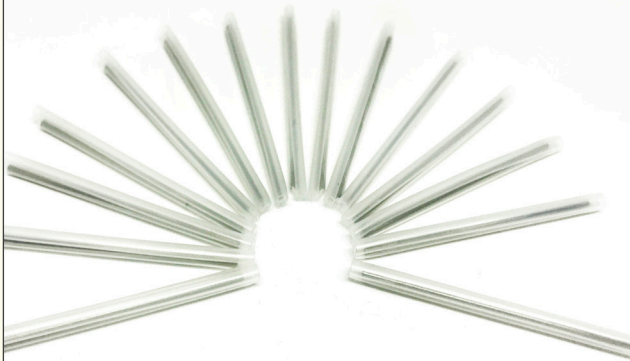
CABLE SPOOL



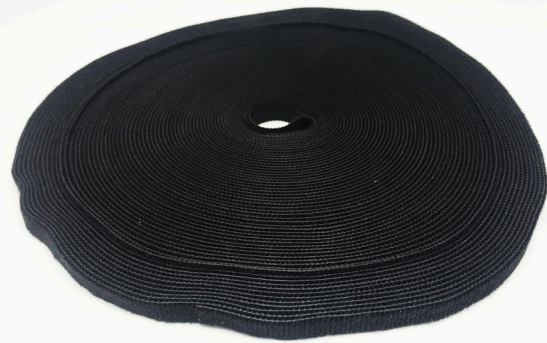
CABLE CUTTER



SPLICE PROTECTORS



VELCRO TIE ROLL



CABLE STRIPPER



CRIMPER



CLEAVER



FTTH DROP CABLE CUTTER



ONE CLICK CLEANER



POLISHING FILM



GLUE



POWER METER

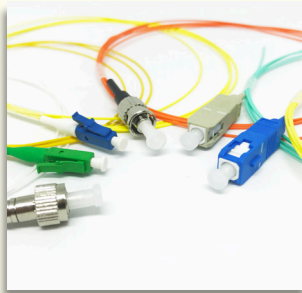
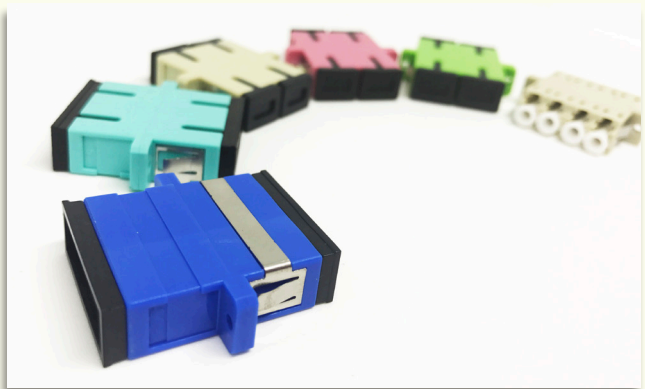
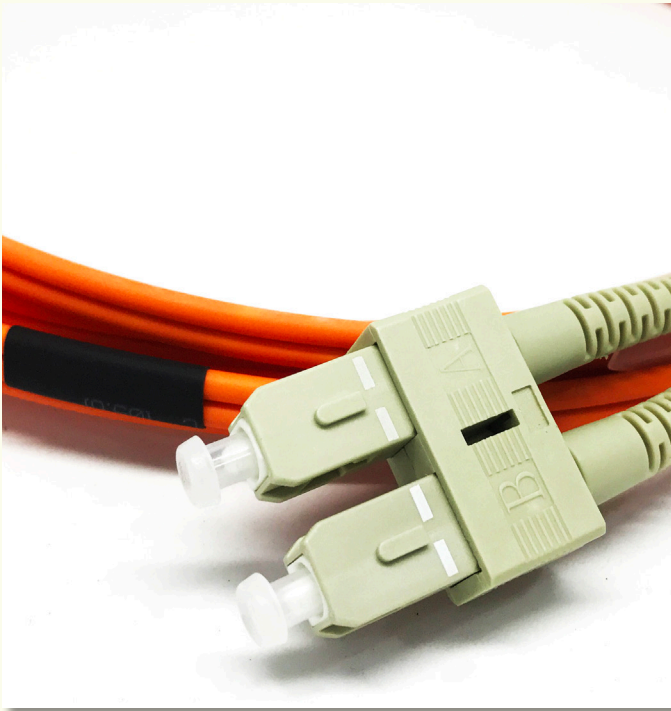


TOGETHER

CONNECT

TO

FUTURE



3 Blake House Admirals Way Canary Wharf London,
E14 9UJ, United Kingdom



+44 20 3793 4795



www.mikrolink.co.uk



info@mikrolink.co.uk