



480F Fiber Optic Splice Closures

Single Element Max: 40 Trays, 40x12 Fibers

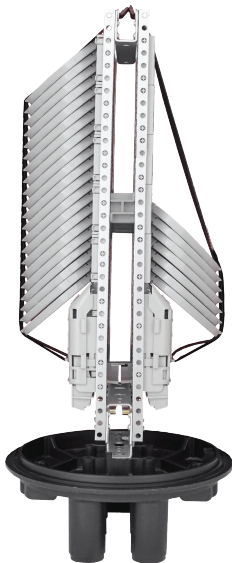
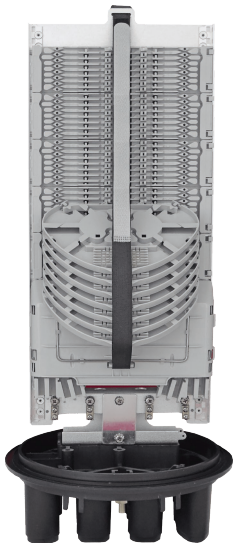
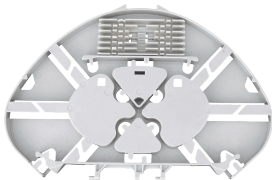
Features

- Modular capacity up to 480 fibers
- May be used for cut, uncut and taut sheath applications.
- May be used for all fiber optic cable.
Sheath retention & central strength member fasten system included.
- Closure construction and lightweight plastic provides strength and resistance to chemical and U.V attack
- Installation and reentry with a minimum of tools
- All hardware is included
- Protection class: IP68
- RoHS compliance

Application

Underground, Aerial, Vault, Pole Mounting and Wall Mountable

Single Element Tray | Thickness: 8mm
12 Splices Capacity



Specifications

Model No.	YT01049 SSC-576250-6P-288-24T/40T-SE 576x265m, 288 Fibers Capacity, 24 Trays, 6 Port, Enclosure , w/o Mounting Kits
Model No.	YT01050 SSC-576250-6P-144-12T/40T-SE 576x265m, 144 Fibers Capacity, 12 Trays, 6 Port, Enclosure , w/o Mounting Kits
Model No.	YT01051 SSC-576250-6P-96-8T/40T-SE 576x265m, 96 Fibers Capacity, 8 Trays, 6 Port, Enclosure , w/o Mounting Kits
Spliced Fiber Storage Capacity	480 splices (40x12)
Size Height x Diameter	576mm x 250mm (w/o clamp), 576mm x 300mm (w/ clamp)
Cable Ports	1 oval port (30mm), 6 round ports (30mm)
Mounting Kits	Wall Mounting Kit - 2 Pole Mounting Kit - 2
See Other Document	