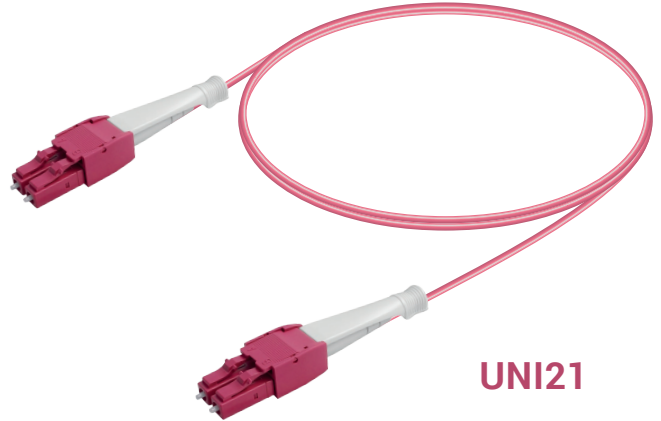


## LC Duplex Polarity Reversible Uniboot Patch Cord | Multi-Mode

### UNI21 Series with Push-Pull Release Handle Mechanism

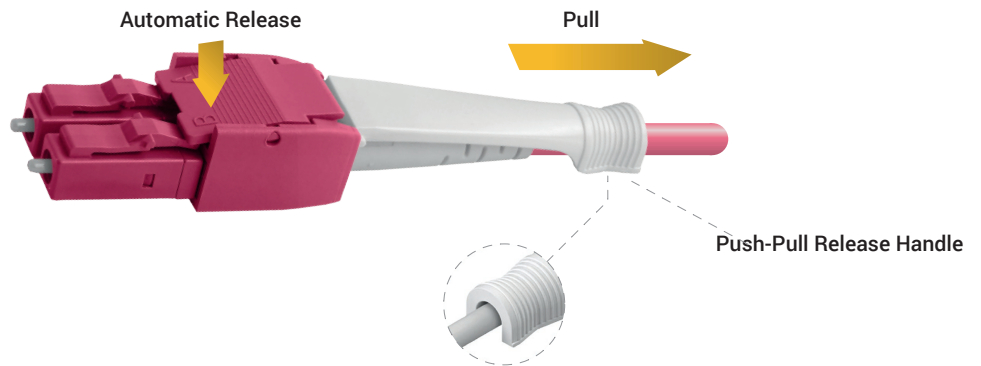
The LC uniboot fiber patch cable have a duplex UNI21 series multi-mode LC connector on each side. The patch cord utilises a special round duplex cable that allows duplex transmission within a single 1.2mm/2.5mm cable.

This uniboot LC duplex patch cord has easy Push-Pull connectors for quicker patching, and the polarity of its connectors can be switched by simply opening the connector's housing.



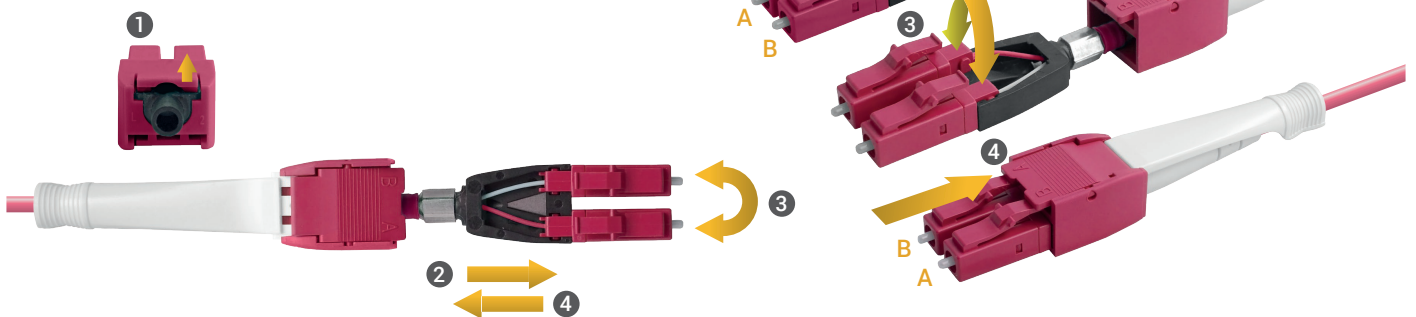
### Connector Features

- Effortless release, using the push-pull mechanism
- Reduced cable tangling due to undivided duplex cords
- Detachable casing makes polarity reversal rather simple
- Compatible with cable diameters from 1.2 mm to 2.5 mm
- IEC61754-20 and GR-326-Core compliant
- RoHS/REACH&UL94-V0 inflammability compliant

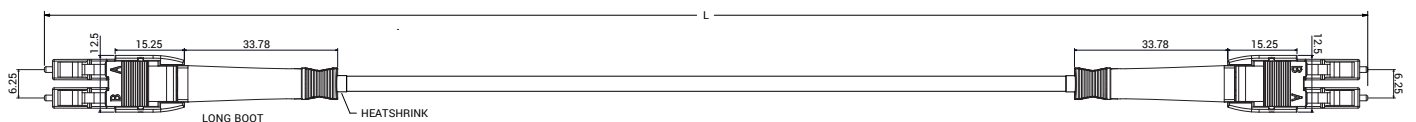


### Polarity Reversal

- Release the locking clamp
- Hold the connectors and pull back outer housing
- Remove the connectors from their slots gently, to avoid any damage and reverse the connectors' positions and reinstall them
- Return the housing back until it snaps



### Dimensions



Unit of measurement: mm

### Connector Specifications

LC Connector Compliance	IEC 61754-20 GR-326-Core RoHS
Alignment Technology	Full ceramic ferrule (Zirconia ZrO <sub>2</sub> )
Operating Temperature	-40°C to +85°C
Flammability	UL94 V-0
Durability	< 0.1dB typical change for > 500 matings

### Cable Specifications

- 2 cores round duplex fiber optic cable
- 2.0mm diameter
- Max. Tensile Strength is 300 N
- Min. Bending Radius is 15 mm
- Cable Color:  
OM2: Orange, OM3: Aqua, OM4: Violet, OM5: Lime Green

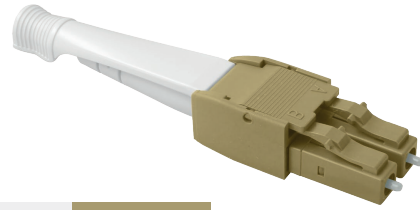
### Optical Performance

Insertion Loss IEC 61300-3-4 Method B	Multi-mode:	≤ 0.30dB Max. 0.15dB Typ.
Return Loss IEC61300-3-6 Method B	Multi-mode:	≥ 35 dB

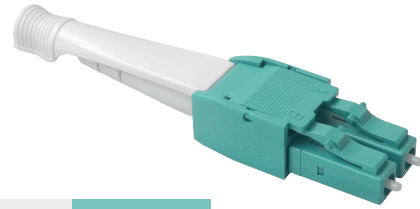
### End-face Control Parameters

Geometry Inspection	UPC : IEC 61755-3-1
Visual Inspection	IEC 61300-3-35

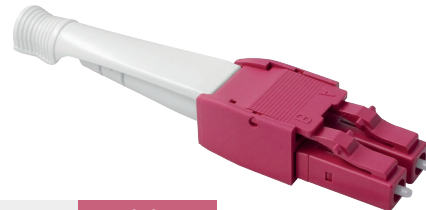
### Color Coding



LC-UPC OM2 **Beige**



LC-UPC OM3 **Aqua**



LC-UPC OM4 **Violet**



LC-UPC OM5 **Lime Green**

### Order Coding

I - PC - 02 - RND - 020 - OM3 - LC(UNI21) - LC(UNI21) - 005M

Type	Type	Fiber Count	Cable Type	Diameter	Fiber Type	1. Connector	2. Connector	Length
Indoor: I	Patch Cord: PC	2 Fibers: 02	Round: RND	2.0 mm: 020	MM G.651 OM1: OM1 MM G.651 OM2: OM2 MM G.651 OM3: OM3 MM G.651 OM4: OM4 MM G.651 OM5: OM5	LC-UPC: LC(UNI21) LC-APC: LA(UNI21)	LC-UPC: LC(UNI21) LC-APC: LA(UNI21)	--- M