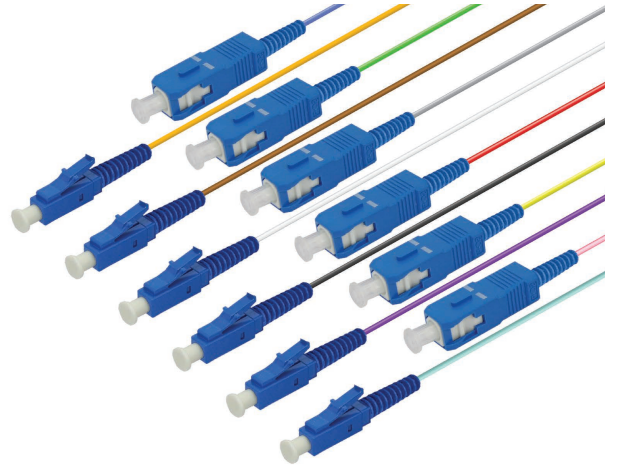


Single Mode Pigtails

Connector Specifications

LC Connector Compliance	IEC 61754-20, TIA 604-10-A, RoHS
SC Connector Compliance	IEC 61754-4, TIA 604-3, RoHS
FC Connector Compliance	IEC 61754-13, TIA 604-4-A, RoHS
ST Connector Compliance	IEC 61754-2, TIA 604-2, RoHS
LSH Connector Compliance	IEC 61754 - 15, TIA 604 - 16, RoHS
Alignment Technology	Full ceramic ferrule (Zirconia ZrO ₂)
Operating Temperature	-40°C to +85°C
Flammability	UL94 V-0
Durability	< 0.1dB typical change for > 500 matings



Optical Performance

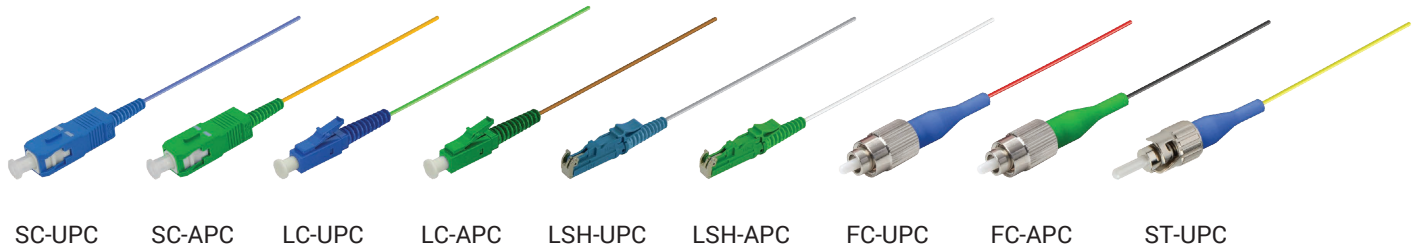
Insertion Loss IEC 61300-3-4 Method B	Single Mode ≤ 0.30dB
Return Loss IEC61300-3-6 Method B	Single Mode UPC: ≥ 50dB Single Mode APC: ≥ 60dB

Cable Specifications

- 900µm with tight or semi-tight options
- Tight stripping length is up to 3 cm
- Semi-tight stripping length is up to 100-150 cm
- Length tolerance is ± 25 mm
- Color abbreviations according to IEC 6075

End-face Control Parameters

Geometry Inspection	UPC : IEC 61755-3-1 APC : IEC 61755-3-2
Visual Inspection	IEC 61300-3-35



SC-UPC SC-APC LC-UPC LC-APC LSH-UPC LSH-APC FC-UPC FC-APC ST-UPC

Order Coding

I - PT - 01 - SB - 009 - A2 - BU - LC - 005M

Type		Type		Fiber Count		Cable Type		Diameter		Fiber Type		Color		1. Connector		Length
Indoor:	I	Pigtail:	PT	1 Fiber:	01	Semi-Tight:	SB	0.9 mm:	009	SM G.657 A2:	A2	Blue:	BU	SC-UPC:	SC	--- M
						Tight:	TB			SM G.657 B3:	B3	Orange:	OG	SC-APC:	SA	
												Green:	GN	LC-UPC:	LC	
												Brown:	BN	LC-APC:	LA	
												Grey:	GY	FC-UPC:	FC	
												White:	WH	FC-APC:	FA	
												Red:	RD	ST-UPC:	ST	
												Black:	BK	LSH-UPC:	E2	
												Yellow:	YE	LSH-APC:	EA	
												Violet:	VT			
												Pink:	PK			
												Aqua:	AQ			

*Colors Coding: IEC 6075