

1U High Density Modular Fiber Panels

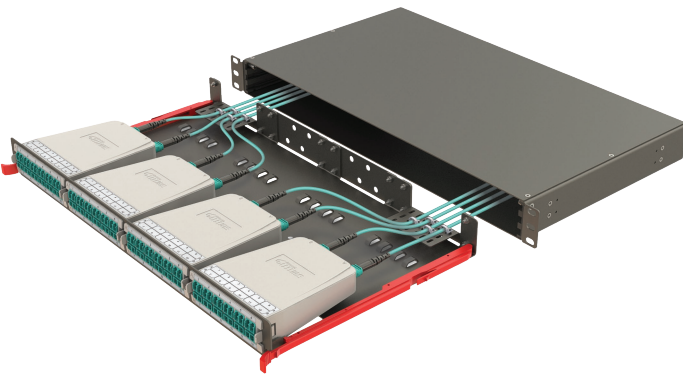
1U high density modular fiber optic panels can terminate, organize and distribute up to 48 fibers. This panel is designed to be mounted on 19" rack systems and it has 4 slots in a 1U unit that can hold MTP/LC conversion cassettes and MTP/LC/SC patch adapter modules. This HD Modular fiber optic panel is compatible with optional accessories such as pre-installed inner splicing trays, cable tie-up plates, fanout fixing plates, blind plates, optical adapters and fiber pigtailed. High Density Modular Fiber Panels are generally used in data centers.

Optional Modularity for Different Applications

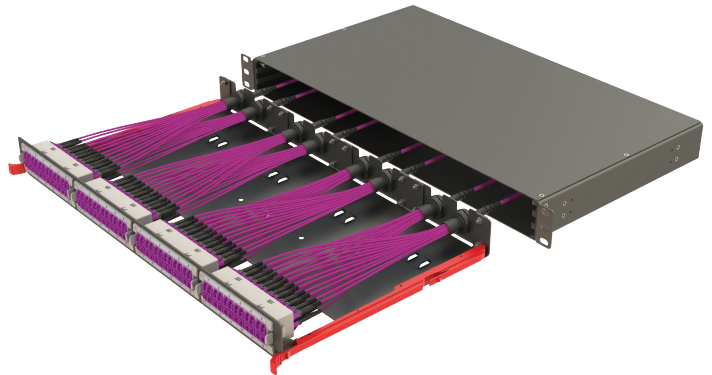
1U Empty Panel



1U MTP to LC Conversion Panel



1U Patch to Patch Panel



Panel Capacity

Type of Modules		Conversion Modules		Patch Modules	
		MTP to LC	MTP to MTP	LC	SC
1U Panel (4 Slots)	Module Capacity	12/24	96/144/288	24	12
	Panel Capacity	48/96	384/576/1152	96	48

Ordering Codes

Standard Content

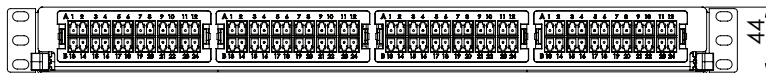
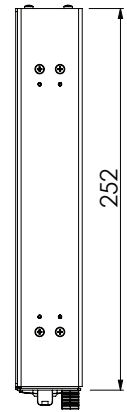
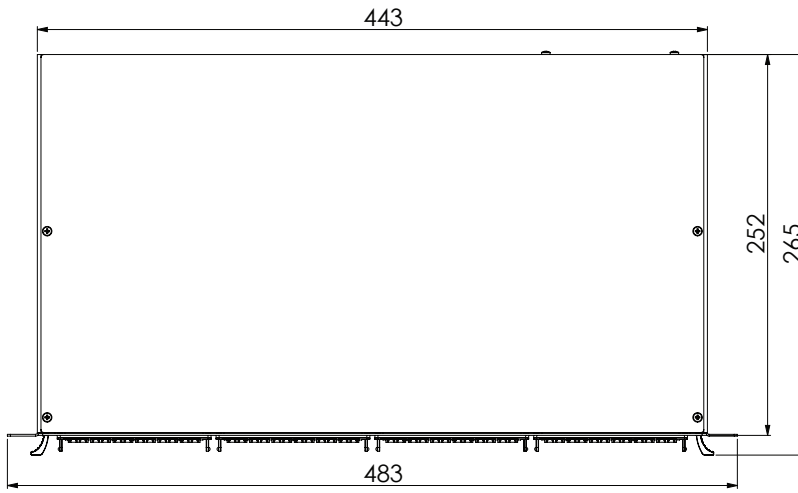
Product Illustration		Code and Description
	<p>Cable Tie Up Plate 2xPC.</p> <p>Blind Plate for Rear Closing 2xPC.</p>	<p>HDM-PANEL-1U-4SL-V0-X1-BLK-NN 19", 1U, 4 Slots, Empty Modular Panel 2 Cable Tie Up and 2 Blind Plates</p>
	<p>Fanout Fixing Plate 2xPC.</p> <p>Blind Plate for Rear Closing 2xPC.</p>	<p>HDM-PANEL-1U-4SL-V0-X2-BLK-NN 19", 1U, 4 Slots, Empty Modular Panel 2 Fanout Fixing and 2 Blind Plates</p>
	<p>Cable Tie Up Plate 4xPC.</p>	<p>HDM-PANEL-1U-4SL-V0-X3-BLK-NN 19", 1U, 4 Slots, Empty Modular Panel 4 Cable Tie Up Plate</p>
	<p>Fanout Fixing Plate 4xPC.</p>	<p>HDM-PANEL-1U-4SL-V0-X4-BLK-NN 19", 1U, 4 Slots, Empty Modular Panel 4 Fanout Fixing Plate</p>

Optional Ordering Items

Product Illustration	Code and Description	Product Illustration	Code and Description
	<p>HDM-PANEL-1U_216GP_BLK 2xPG16 Gland Plate-Straight</p>		<p>HDM-PAM-BP-WH Blind Plate for Front Slots</p>
	<p>HD-CASSETTE-24F_WH 24F Fiber Splice Cassette</p>		

Panel Dimensions

Measuring Unit: mm



1U