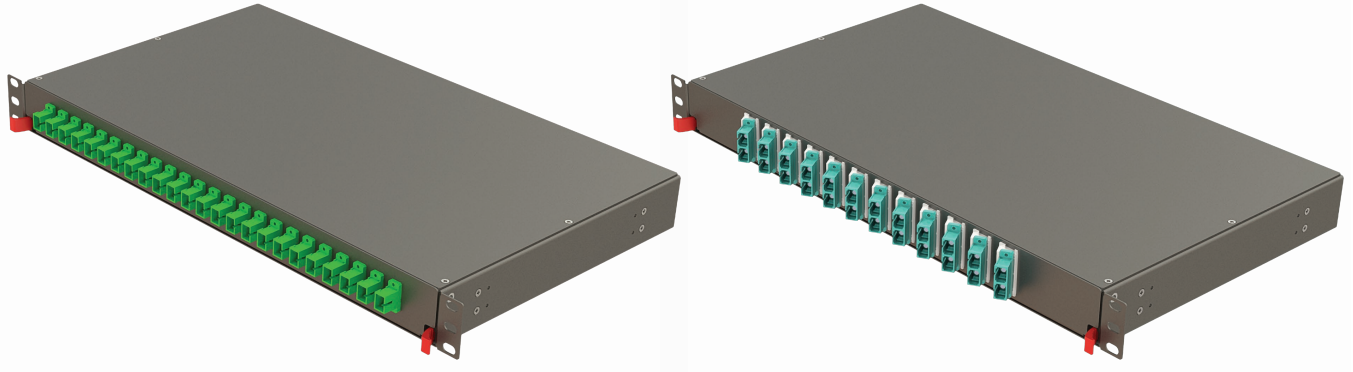


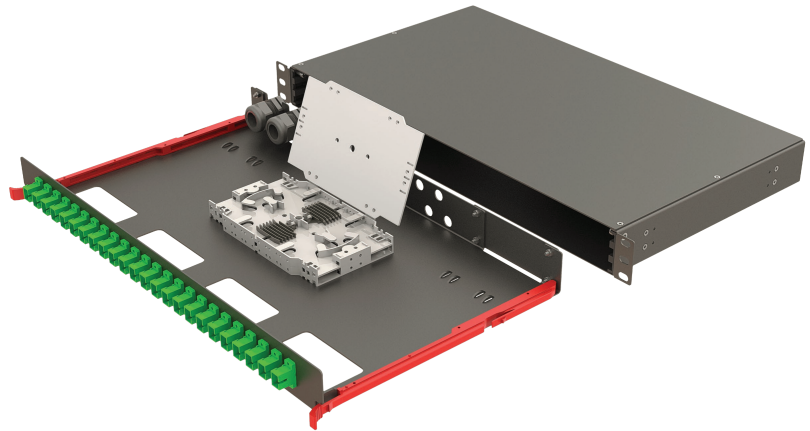
1U NGP Series Front Patch Panels

The new generation 1U NGP series panels are used to terminate and distribute optical fiber cables with high capacity, from 12 to 96 fibers. NGP panels are convenient equipment to organize and connect the fiber optic links, and are designed to be used in telecommunication networks, central offices, fiber optic infrastructure and on-premises fiber networks. Our fiber optic panels follow the typical rack mount standards, and they come with different kinds of optional fiber optic adapters, ports and pre-installed inner trays, accessories, and different types of pigtails.

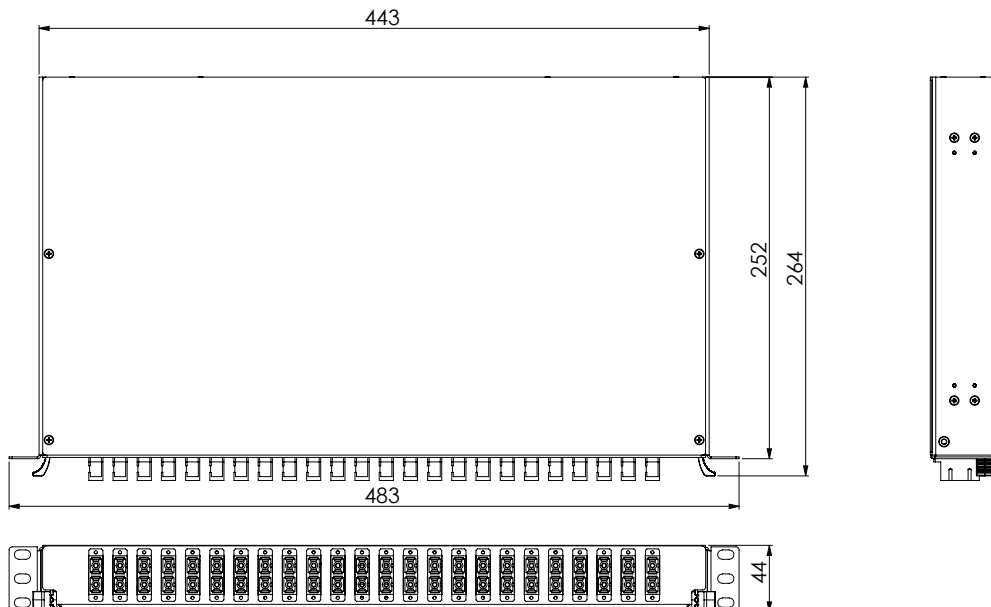


Features

- Easy time-saving installation
- Patented Rail System
- Angled Front Panel Option
- Different front panel options
- Compact and safe design
- Rear cable entry
- Captive Panel Screws for easy/safe locking
- Easy connector and cable accessibility
- Bend radius protection

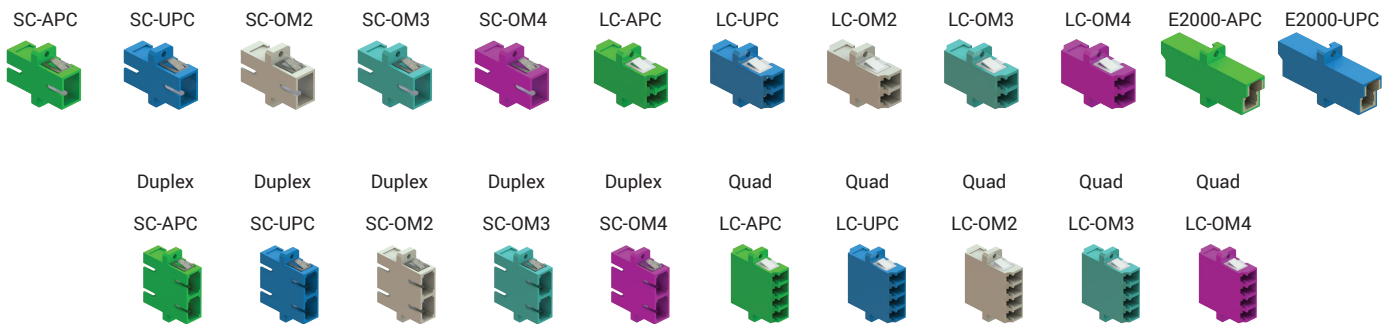


Dimensions



NGP Series Front Panels

Front Panels	Panel Model		
	Panel Code	Hole Count	Available Adapter- Fiber Capacity
	NGP01	24	SC Simplex - 24 Fibers LC Duplex - 48 Fibers E2000 Simplex - 24 Fibers
	NGP02	24	SC Duplex - 48 Fibers LC Quad - 96 Fibers
	NGP03	12	SC Simplex - 12 Fibers LC Duplex - 24 Fibers E2000 Simplex - 12 Fibers
	NGP04	12	SC Duplex - 24 Fibers LC Quad - 48 Fibers



Ordering Coding 19" NGP Series Patch Panel

(sample coding)

NGP - 1U - NGP01 - A2 - SC - SX - 24

Height	Front Panel	Fiber Type	Connector	Port Options	Fiber Count
44 mm: 1U	Panel-01: NGP01 Panel-02: NGP02 Panel-03: NGP03 Panel-04: NGP04	Empty: NN G657.A1: A1 G657.A2: A2 G652.OM2: M2 G652.OM3: M3 G652.OM4: M4	Empty: NN SC/UPC: SC SC/APC: SA LC/UPC: LC LC/APC: LA FC/UPC: FC FC/APC: FA ST/UPC: ST E2000/UPC: E2 E2000/APC: EA	Empty: NN Simplex: SX Duplex: DX Quad: QD	Empty: NN 24 Fibers: 24 48 Fibers: 48 96 Fibers: 96