

Fiber Management Shelves

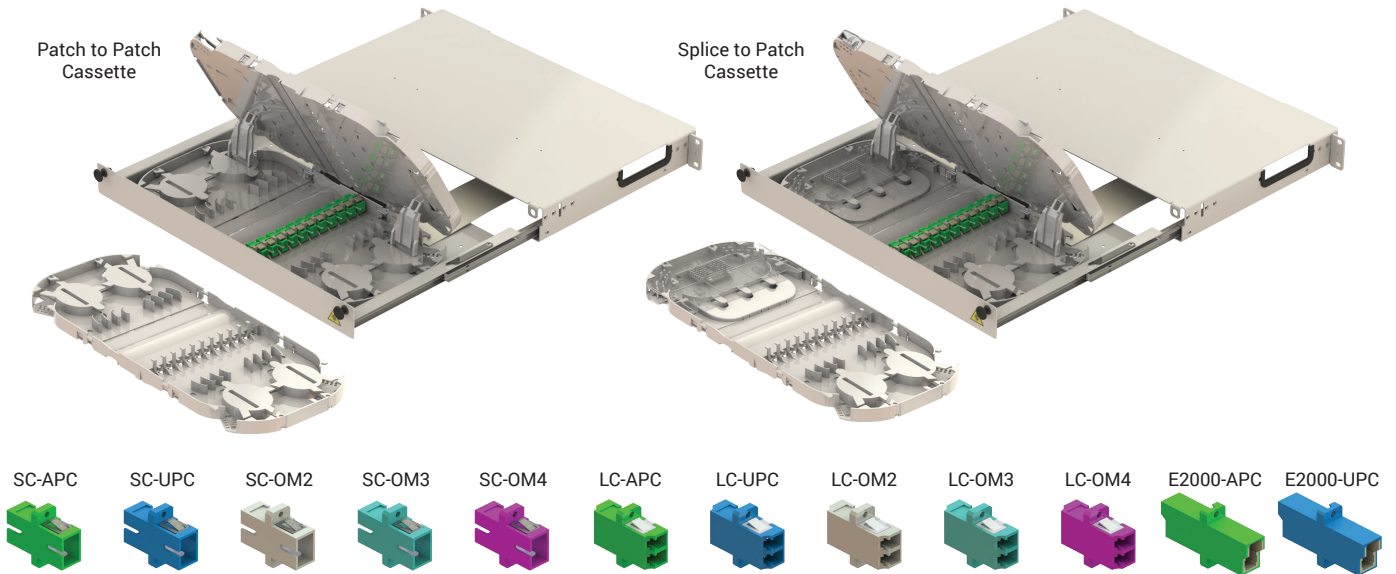


Call Center | +90 444 1 726

19" PP/SP 1U Fiber Management Shelves

Fiber Management Shelves are used to terminate and distribute optical fiber cables, termination box is ranging from 12 ports to 96 ports. They are convenient equipment to organize and connect the fiber optic links. It is suitable for the use in telecommunication network, central office optical cable system and premise fiber networks.

Typical type of our fiber panels are rack mounted, they are with optional different kinds of fiber optic adapters ports and pre-installed inner trays and accessories, optional pigtailed with different types



Features

- Clean: Both sides easily accessible for cleaning adapters
- Safe: Laser light oriented perpendicularly to the operator
- Accessible: Full front access at both sides of connection
- Visible: Patch cords do not hamper access or visibility of ports
- Easy reconnection within tray or shelf without uncontrolled overlengths
- Manipulation of patch cords does not cause fiber loss
- Connectors in trays are more secured than in front facing patch panels
- Shelves are painted (powder-coated) in light grey (RAL 7035)

Dimensions

Chassis Size	19"
Shelf Unit Height	1U
Width (w/ mounting brackets)	481
Width (w/o mounting brackets)	443
Height	44
Depth	276

Model Coding

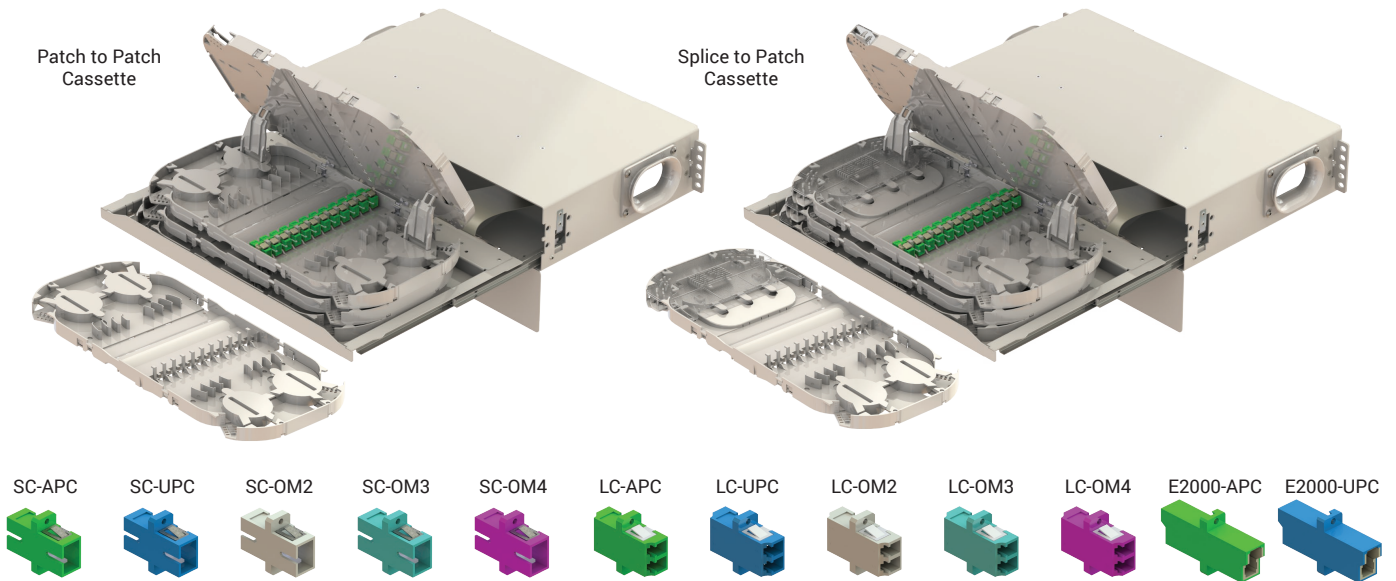
Patch to Patch	
Order Code	Description
FMS19-1U-PP-SM-SC-24	Single Mode, 24 SC/UPC
FMS19-1U-PP-SM-SA-24	Single Mode, 24 SC/APC
FMS19-1U-PP-M2-SC-24	Multi Mode(OM2), 24 SC/UPC
FMS19-1U-PP-M3-SC-24	Multi Mode(OM3), 24 SC/UPC
FMS19-1U-PP-M4-SC-24	Multi Mode(OM4), 24 SC/UPC
FMS19-1U-PP-SM-LC-48	Single Mode, 48 LC/UPC
FMS19-1U-PP-SM-LA-48	Single Mode, 48 LC/APC
FMS19-1U-PP-M2-LC-48	Multi Mode(OM2), 48 LC/UPC
FMS19-1U-PP-M3-LC-48	Multi Mode(OM3), 48 LC/UPC
FMS19-1U-PP-M4-LC-48	Multi Mode(OM4), 48 LC/UPC
FMS19-1U-PP-SM-E2-24	Single Mode, 24 E2000/UPC
FMS19-1U-PP-SM-EA-24	Single Mode, 24 E2000/APC

Splice to Patch	
Order Code	Description
FMS19-1U-SP-SM-SC-24	Single Mode, 24 SC/UPC
FMS19-1U-SP-SM-SA-24	Single Mode, 24 SC/APC
FMS19-1U-SP-M2-SC-24	Multi Mode(OM2), 24 SC/UPC
FMS19-1U-SP-M3-SC-24	Multi Mode(OM3), 24 SC/UPC
FMS19-1U-SP-M4-SC-24	Multi Mode(OM4), 24 SC/UPC
FMS19-1U-SP-SM-LC-48	Single Mode, 48 LC/UPC
FMS19-1U-SP-SM-LA-48	Single Mode, 48 LC/APC
FMS19-1U-SP-M2-LC-48	Multi Mode(OM2), 48 LC/UPC
FMS19-1U-SP-M3-LC-48	Multi Mode(OM3), 48 LC/UPC
FMS19-1U-SP-M4-LC-48	Multi Mode(OM4), 48 LC/UPC
FMS19-1U-SP-SM-E2-24	Single Mode, 24 E2000/UPC
FMS19-1U-SP-SM-EA-24	Single Mode, 24 E2000/APC

19" PP/SP 2U Fiber Management Shelves

Fiber Management Shelves are used to terminate and distribute optical fiber cables, termination box is ranging from 12 ports to 96 ports. They are convenient equipment to organize and connect the fiber optic links. It is suitable for the use in telecommunication network, central office optical cable system and premise fiber networks.

Typical type of our fiber panels are rack mounted, they are with optional different kinds of fiber optic adapters ports and pre-installed inner trays and accessories, optional pigtails with different types.



Features

- Clean: Both sides easily accessible for cleaning adapters
- Safe: Laser light oriented perpendicularly to the operator
- Accessible: Full front access at both sides of connection
- Visible: Patch cords do not hamper access or visibility of ports
- Easy reconnection within tray or shelf without uncontrolled overlengths
- Manipulation of patch cords does not cause fiber loss
- Connectors in trays are more secured than in front facing patch panels
- Shelves are painted (powder-coated) in light grey (RAL 7035)

Dimensions

Chassis Size	19"
Shelf Unit Height	2U
Width (w/ mounting brackets)	481
Width (w/o mounting brackets)	443
Height	88
Depth	276

Model Coding

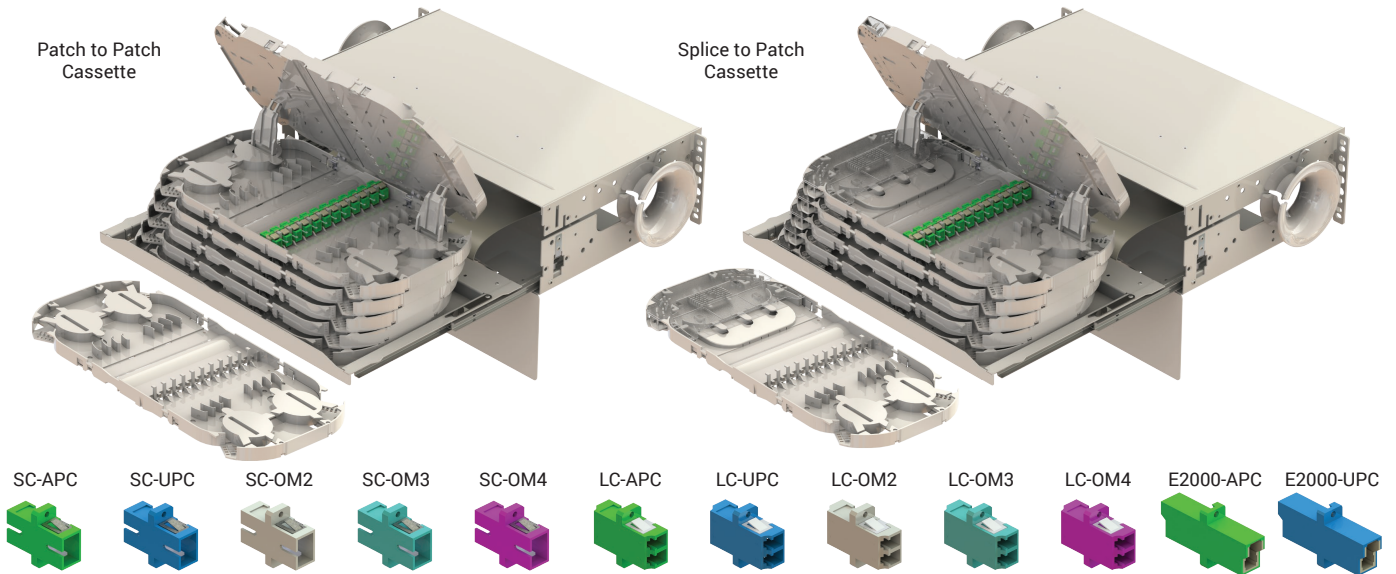
Patch to Patch	
Order Code	Description
FMS19-2U-PP-SM-SC-48	Single Mode, 48 SC/UPC
FMS19-2U-PP-SM-SA-48	Single Mode, 48 SC/APC
FMS19-2U-PP-M2-SC-48	Multi Mode(OM2), 48 SC/UPC
FMS19-2U-PP-M3-SC-48	Multi Mode(OM3), 48 SC/UPC
FMS19-2U-PP-M4-SC-48	Multi Mode(OM4), 48 SC/UPC
FMS19-2U-PP-SM-LC-96	Single Mode, 96 LC/UPC
FMS19-2U-PP-SM-LA-96	Single Mode, 96 LC/APC
FMS19-2U-PP-M2-LC-96	Multi Mode(OM2), 96 LC/UPC
FMS19-2U-PP-M3-LC-96	Multi Mode(OM3), 96 LC/UPC
FMS19-2U-PP-M4-LC-96	Multi Mode(OM4), 96 LC/UPC
FMS19-2U-PP-SM-E2-48	Single Mode, 48 E2000/UPC
FMS19-2U-PP-SM-EA-48	Single Mode, 48 E2000/APC

Splice to Patch	
Order Code	Description
FMS19-2U-SP-SM-SC-48	Single Mode, 48 SC/UPC
FMS19-2U-SP-SM-SA-48	Single Mode, 48 SC/APC
FMS19-2U-SP-M2-SC-48	Multi Mode(OM2), 48 SC/UPC
FMS19-2U-SP-M3-SC-48	Multi Mode(OM3), 48 SC/UPC
FMS19-2U-SP-M4-SC-48	Multi Mode(OM4), 48 SC/UPC
FMS19-2U-SP-SM-LC-96	Single Mode, 96 LC/UPC
FMS19-2U-SP-SM-LA-96	Single Mode, 96 LC/APC
FMS19-2U-SP-M2-LC-96	Multi Mode(OM2), 96 LC/UPC
FMS19-2U-SP-M3-LC-96	Multi Mode(OM3), 96 LC/UPC
FMS19-2U-SP-M4-LC-96	Multi Mode(OM4), 96 LC/UPC
FMS19-2U-SP-SM-E2-48	Single Mode, 48 E2000/UPC
FMS19-2U-SP-SM-EA-48	Single Mode, 48 E2000/APC

19" PP/SP 3U Fiber Management Shelves

Fiber Management Shelves are used to terminate and distribute optical fiber cables, termination box is ranging from 12 ports to 96 ports. They are convenient equipment to organize and connect the fiber optic links. It is suitable for the use in telecommunication network, central office optical cable system and premise fiber networks.

Typical type of our fiber panels are rack mounted, they are with optional different kinds of fiber optic adapters ports and pre-installed inner trays and accessories, optional pigtailed with different types.



Features

- Clean: Both sides easily accessible for cleaning adapters
- Safe: Laser light oriented perpendicularly to the operator
- Accessible: Full front access at both sides of connection
- Visible: Patch cords do not hamper access or visibility of ports
- Easy reconnection within tray or shelf without uncontrolled overlengths
- Manipulation of patch cords does not cause fiber loss
- Connectors in trays are more secured than in front facing patch panels
- Shelves are painted (powder-coated) in light grey (RAL 7035)

Dimensions

Chassis Size	19"
Shelf Unit Height	3U
Width (w/ mounting brackets)	481
Width (w/o mounting brackets)	443
Height	122
Depth	276

Model Coding

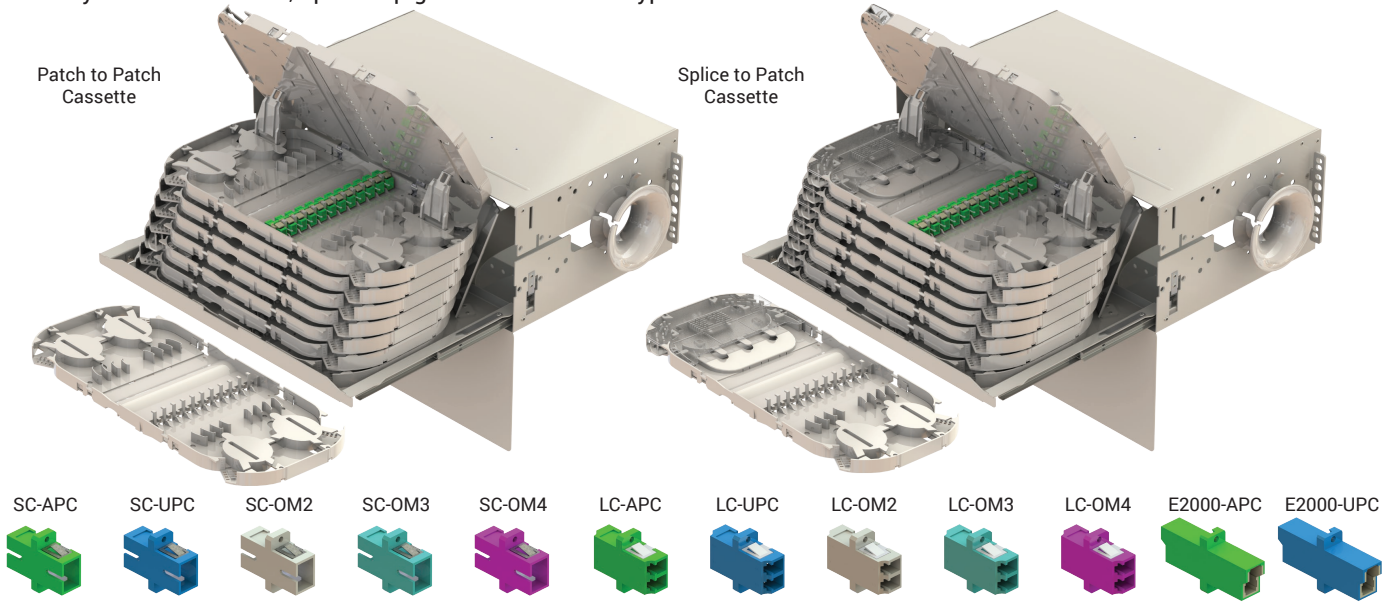
Patch to Patch	
Order Code	Description
FMS19-3U-PP-SM-SC-72	Single Mode, 72 SC/UPC
FMS19-3U-PP-SM-SA-72	Single Mode, 72 SC/APC
FMS19-3U-PP-M2-SC-72	Multi Mode(OM2), 72 SC/UPC
FMS19-3U-PP-M3-SC-72	Multi Mode(OM3), 72 SC/UPC
FMS19-3U-PP-M4-SC-72	Multi Mode(OM4), 72 SC/UPC
FMS19-3U-PP-SM-LC-144	Single Mode, 144 LC/UPC
FMS19-3U-PP-SM-LA-144	Single Mode, 144 LC/APC
FMS19-3U-PP-M2-LC-144	Multi Mode(OM2), 144 LC/UPC
FMS19-3U-PP-M3-LC-144	Multi Mode(OM3), 144 LC/UPC
FMS19-3U-PP-M4-LC-144	Multi Mode(OM4), 144 LC/UPC
FMS19-3U-PP-SM-E2-72	Single Mode, 72 E2000/UPC
FMS19-3U-PP-SM-EA-72	Single Mode, 72 E2000/APC

Splice to Patch	
Order Code	Description
FMS19-3U-SP-SM-SC-72	Single Mode, 72 SC/UPC
FMS19-3U-SP-SM-SA-72	Single Mode, 72 SC/APC
FMS19-3U-SP-M2-SC-72	Multi Mode(OM2), 72 SC/UPC
FMS19-3U-SP-M3-SC-72	Multi Mode(OM3), 72 SC/UPC
FMS19-3U-SP-M4-SC-72	Multi Mode(OM4), 72 SC/UPC
FMS19-3U-SP-SM-LC-144	Single Mode, 144 LC/UPC
FMS19-3U-SP-SM-LA-144	Single Mode, 144 LC/APC
FMS19-3U-SP-M2-LC-144	Multi Mode(OM2), 144 LC/UPC
FMS19-3U-SP-M3-LC-144	Multi Mode(OM3), 144 LC/UPC
FMS19-3U-SP-M4-LC-144	Multi Mode(OM4), 144 LC/UPC
FMS19-3U-SP-SM-E2-72	Single Mode, 72 E2000/UPC
FMS19-3U-SP-SM-EA-72	Single Mode, 72 E2000/APC

19" PP/SP 4U Fiber Management Shelves

Fiber Management Shelves are used to terminate and distribute optical fiber cables, termination box is ranging from 12 ports to 96 ports. They are convenient equipment to organize and connect the fiber optic links. It is suitable for the use in telecommunication network, central office optical cable system and premise fiber networks.

Typical type of our fiber panels are rack mounted, they are with optional different kinds of fiber optic adapters ports and pre-installed inner trays and accessories, optional pigtails with different types.



Features

- Clean: Both sides easily accessible for cleaning adapters
- Safe: Laser light oriented perpendicularly to the operator
- Accessible: Full front access at both sides of connection
- Visible: Patch cords do not hamper access or visibility of ports
- Easy reconnection within tray or shelf without uncontrolled overlengths
- Manipulation of patch cords does not cause fiber loss
- Connectors in trays are more secured than in front facing patch panels
- Shelves are painted (powder-coated) in light grey (RAL 7035)

Dimensions

Chassis Size	19"
Shelf Unit Height	4U
Width (w/ mounting brackets)	481
Width (w/o mounting brackets)	443
Height	168
Depth	276

Model Coding

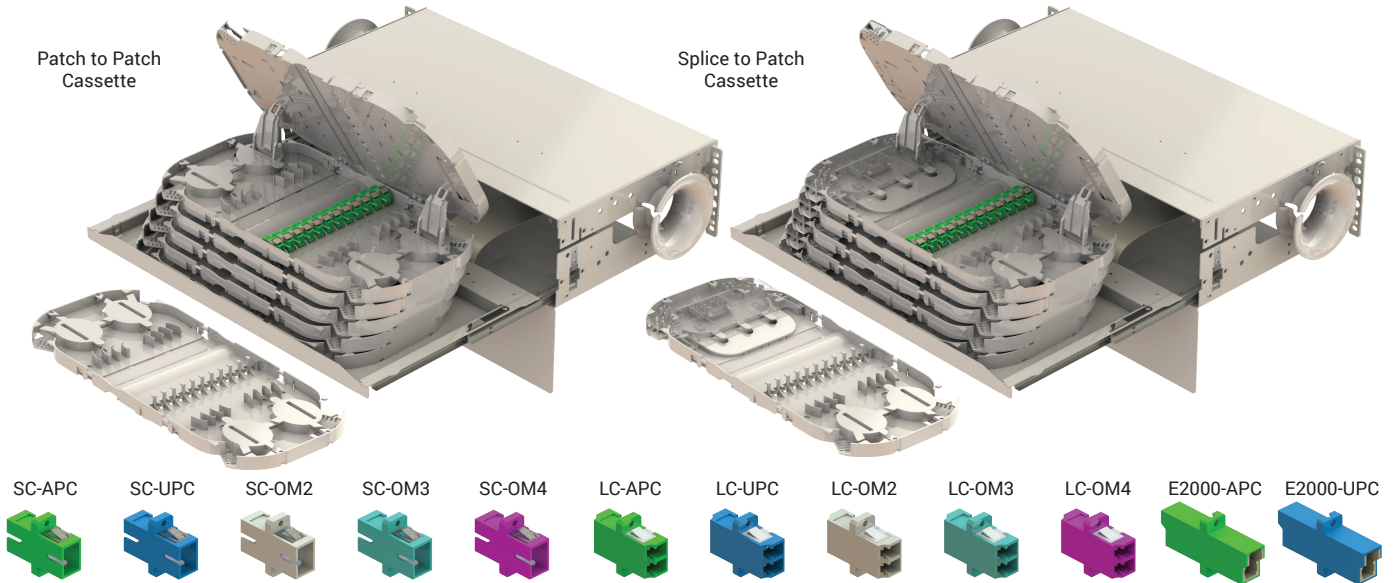
Patch to Patch	
Order Code	Description
FMS19-4U-PP-SM-SC-96	Single Mode, 96 SC/UPC
FMS19-4U-PP-SM-SA-96	Single Mode, 96 SC/APC
FMS19-4U-PP-M2-SC-96	Multi Mode(OM2), 96 SC/UPC
FMS19-4U-PP-M3-SC-96	Multi Mode(OM3), 96 SC/UPC
FMS19-4U-PP-M4-SC-96	Multi Mode(OM4), 96 SC/UPC
FMS19-4U-PP-SM-LC-192	Single Mode, 192 LC/UPC
FMS19-4U-PP-SM-LA-192	Single Mode, 192 LC/APC
FMS19-4U-PP-M2-LC-192	Multi Mode(OM2), 192 LC/UPC
FMS19-4U-PP-M3-LC-192	Multi Mode(OM3), 192 LC/UPC
FMS19-4U-PP-M4-LC-192	Multi Mode(OM4), 192 LC/UPC
FMS19-4U-PP-SM-E2-96	Single Mode, 96 E2000/UPC
FMS19-4U-PP-SM-EA-96	Single Mode, 96 E2000/APC

Splice to Patch	
Order Code	Description
FMS19-4U-SP-SM-SC-96	Single Mode, 96 SC/UPC
FMS19-4U-SP-SM-SA-96	Single Mode, 96 SC/APC
FMS19-4U-SP-M2-SC-96	Multi Mode(OM2), 96 SC/UPC
FMS19-4U-SP-M3-SC-96	Multi Mode(OM3), 96 SC/UPC
FMS19-4U-SP-M4-SC-96	Multi Mode(OM4), 96 SC/UPC
FMS19-4U-SP-SM-LC-192	Single Mode, 192 LC/UPC
FMS19-4U-SP-SM-LA-192	Single Mode, 192 LC/APC
FMS19-4U-SP-M2-LC-192	Multi Mode(OM2), 192 LC/UPC
FMS19-4U-SP-M3-LC-192	Multi Mode(OM3), 192 LC/UPC
FMS19-4U-SP-M4-LC-192	Multi Mode(OM4), 192 LC/UPC
FMS19-4U-SP-SM-E2-96	Single Mode, 96 E2000/UPC
FMS19-4U-SP-SM-EA-96	Single Mode, 96 E2000/APC

21" PP/SP 3U Fiber Management Shelves

Fiber Management Shelves are used to terminate and distribute optical fiber cables, termination box is ranging from 12 ports to 96 ports. They are convenient equipment to organize and connect the fiber optic links. It is suitable for the use in telecommunication network, central office optical cable system and premise fiber networks.

Typical type of our fiber panels are rack mounted, they are with optional different kinds of fiber optic adapters ports and pre-installed inner trays and accessories, optional pigtailed with different types.



Features

- Clean: Both sides easily accessible for cleaning adapters
- Safe: Laser light oriented perpendicularly to the operator
- Accessible: Full front access at both sides of connection
- Visible: Patch cords do not hamper access or visibility of ports
- Easy reconnection within tray or shelf without uncontrolled overlengths
- Manipulation of patch cords does not cause fiber loss
- Connectors in trays are more secured than in front facing patch panels
- Shelves are painted (powder-coated) in light grey (RAL 7035)

Dimensions

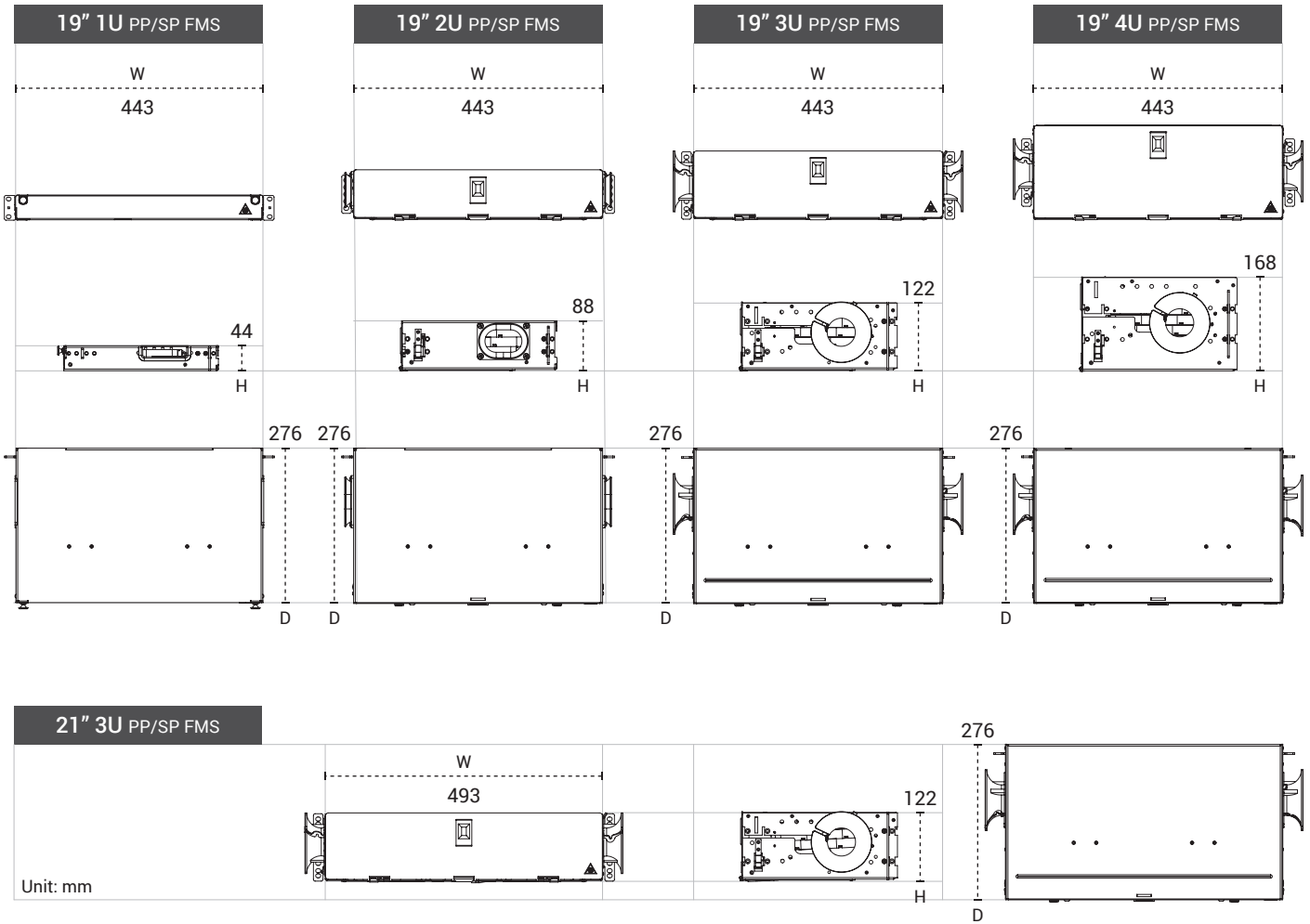
Chassis Size	21"
Shelf Unit Height	3U
Width (w/ mounting brackets)	541
Width (w/o mounting brackets)	493
Height	122
Depth	276

Model Coding

Patch to Patch	
Order Code	Description
FMS21-3U-PP-SM-SC-72	Single Mode, 72 SC/UPC
FMS21-3U-PP-SM-SA-72	Single Mode, 72 SC/APC
FMS21-3U-PP-M2-SC-72	Multi Mode(OM2), 72 SC/UPC
FMS21-3U-PP-M3-SC-72	Multi Mode(OM3), 72 SC/UPC
FMS21-3U-PP-M4-SC-72	Multi Mode(OM4), 72 SC/UPC
FMS21-3U-PP-SM-LC-144	Single Mode, 144 LC/UPC
FMS21-3U-PP-SM-LA-144	Single Mode, 144 LC/APC
FMS21-3U-PP-M2-LC-144	Multi Mode(OM2), 144 LC/UPC
FMS21-3U-PP-M3-LC-144	Multi Mode(OM3), 144 LC/UPC
FMS21-3U-PP-M4-LC-144	Multi Mode(OM4), 144 LC/UPC
FMS21-3U-PP-SM-E2-72	Single Mode, 72 E2000/UPC
FMS21-3U-PP-SM-EA-72	Single Mode, 72 E2000/APC

Splice to Patch	
Order Code	Description
FMS21-3U-SP-SM-SC-72	Single Mode, 72 SC/UPC
FMS21-3U-SP-SM-SA-72	Single Mode, 72 SC/APC
FMS21-3U-SP-M2-SC-72	Multi Mode(OM2), 72 SC/UPC
FMS21-3U-SP-M3-SC-72	Multi Mode(OM3), 72 SC/UPC
FMS21-3U-SP-M4-SC-72	Multi Mode(OM4), 72 SC/UPC
FMS21-3U-SP-SM-LC-144	Single Mode, 144 LC/UPC
FMS21-3U-SP-SM-LA-144	Single Mode, 144 LC/APC
FMS21-3U-SP-M2-LC-144	Multi Mode(OM2), 144 LC/UPC
FMS21-3U-SP-M3-LC-144	Multi Mode(OM3), 144 LC/UPC
FMS21-3U-SP-M4-LC-144	Multi Mode(OM4), 144 LC/UPC
FMS21-3U-SP-SM-E2-72	Single Mode, 72 E2000/UPC
FMS21-3U-SP-SM-EA-72	Single Mode, 72 E2000/APC

Dimensions & Accessories



Accessories

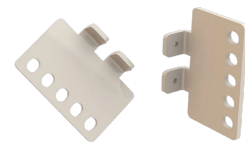
1U (19" to 21") Extension Kit



2U (19" to 21") Extension Kit



3U / 4U (19" to 21") Extension Kit



SAMM Teknoloji
İletişim San. ve Tic. A.Ş.

Website: www.samm.com
E-mail: info@samm.com

Tel: 444 17 26
Tel: +90 (262) 677 16 80
Fax: +90 (262) 677 16 81

Head Office and Gebze Factory Address:
Gebze Organize Sanayi Bölgesi (GOSB)
İhsandede Cd. 800. Sok No: 802
41400 Gebze - Kocaeli, Türkiye

     /SammTeknoloji