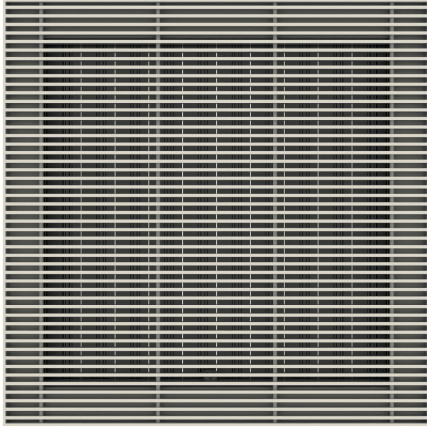


Raised Floor Grilles

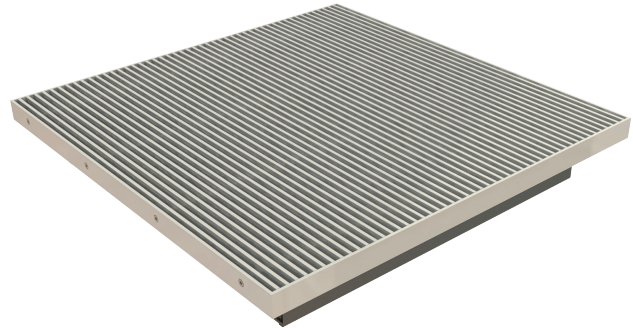
Raised Floor Grilles are air routing structures developed and designed to be mounted on raised floor systems in areas where high volume cooling is required in data centers. Typically its dimensions are 600mmx600mm. Adjustable air flow density low to high with damper mechanism adaptation.

There are options with and without damper.



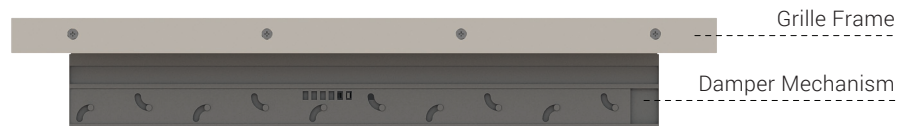
Grille Frame With Damper

It provides more effective cooling to the devices with its blades that are used to direct the cold air flow coming from the lower surface at the desired angle. Air flow density can be adjusted with a screw driver.



Grille Frame Without Damper

It has a standard angle and transmits the cold air flow coming from the bottom surface to the devices at a fixed angle.



Key Features

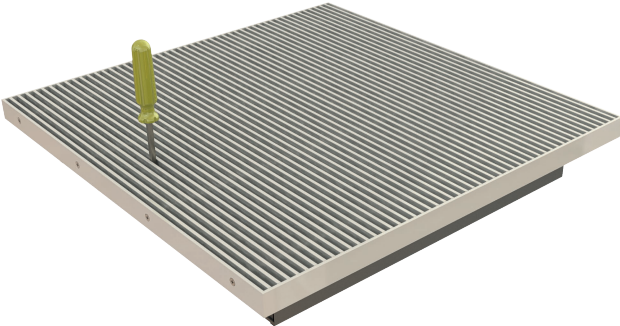
- Floor grille Frame is constructed of high quality extruded aluminium profile with the advantages of corrosion resistance and rigidity.
- Air flow density can be adjusted on damper mechanism low to high with a screw driver.
- Structure is robustly constructed with face bars positioned in the frame
- Frame is structured from high quality extruded aluminium profile 4 mm thick, flange width 30 mm.
- "I" section profiles are 20 mm high which are made up of high quality extruded aluminium.
- Epoxy polyester powder coated as per RAL color codes.

Ordering Codes

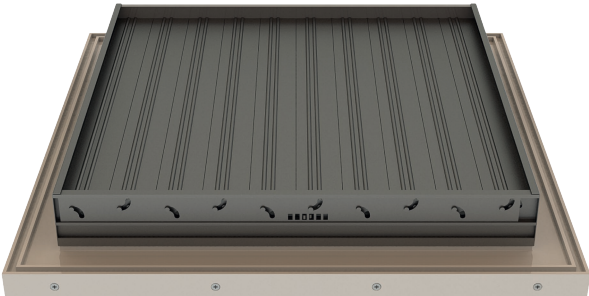
Product Code	Description
MT09929	Floor Grille Frame 600mmx600mm
MT09930	Floor Grille Frame 600mmx600mm with Damper

Air Flow Management

Use a screw driver to adjust or block the air flow.



Air Flow Blocked



Air Flow Released



Dimensions

